



### Features:

- Cast brass spout and valves
- Ceramic disc valve cartridge
- Adjustable hot limit safety stop
- Pressure Balance cartridge maintains constant output temperature in response to changes in relative hot and cold supply pressures
- Integral diverter
- 8" Traditional rain shower head
- Available with Cross or Lever Handle
- Maximum Showerhead Flow Rate: 2.5 GPM (9.5L/min)

Pictured: 845/400 Tub & Shower Set with Cross Handle

| Kit Options           | Handle Type | Product Number |
|-----------------------|-------------|----------------|
| Tub & Shower Set      | Cross       | 845/400        |
| Tub & Shower Set      | Lever       | 845/401        |
| PB Diverter Valve Set | Cross       | 845/140        |
| PB Diverter Valve Set | Lever       | 845/141        |



| Available Finishes: | Finish Code |
|---------------------|-------------|
| Polished Chrome     | 100         |
| Old Bronze          | 105         |
| Brushed Nickel      | 144         |
| Platinum Nickel     | 150         |
| Antique Nickel      | 444         |

| Rough & Trim Options              | Handle Type | Product Number |
|-----------------------------------|-------------|----------------|
| Tub & Shower Set Trim Only*       | Cross       | 845/495        |
| Tub & Shower Set Trim Only*       | Lever       | 845/496        |
| PB Diverter Valve Set Trim Only** | Cross       | 845/545        |
| PB Diverter Valve Set Trim Only** | Lever       | 845/546        |
| Showerhead Only                   |             | 860/108        |
| Tub Spout Only                    |             | 845/017        |
| Rough Only                        |             | 899/261/191    |

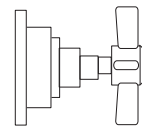


\* Includes Pressure Balance Diverter Valve Trim, Showerhead & Tub Spout

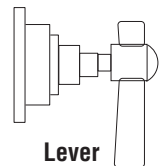
\*\*Pressure Balance Diverter Valve Trim Only

| Extension Kits            | Product Number |
|---------------------------|----------------|
| PB Handle Extension Kit   | A3195.191      |
| PB Diverter Extension Kit | A3196.191      |

### Handle Options:



Cross



Lever

ROUGH-IN DIAGRAM SHOWN ON REVERSE SIDE

### CODES & STANDARDS

These products meet and exceed the following codes and standards:

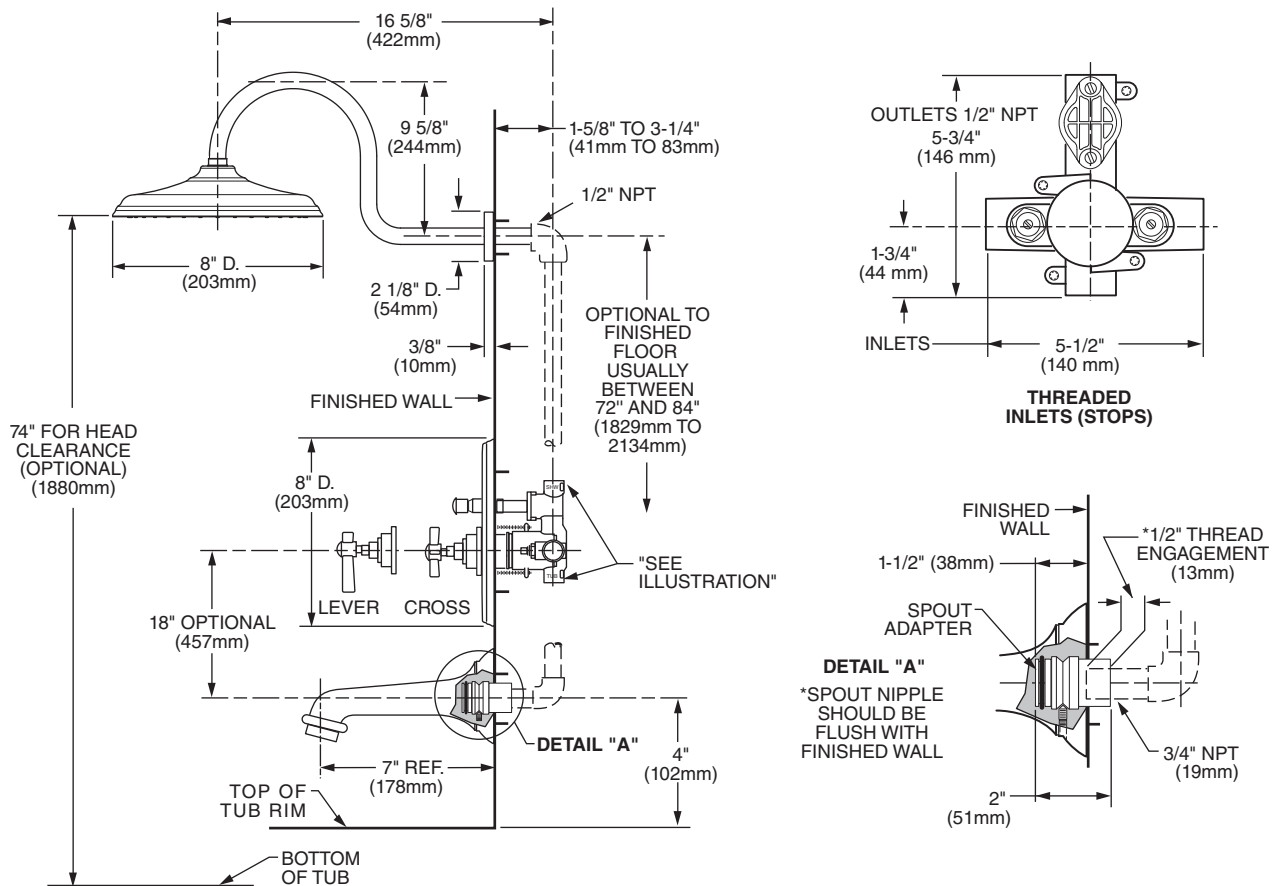
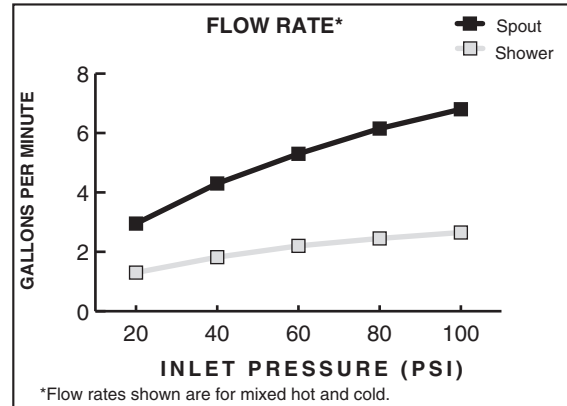
**ASME A112.18.1**

**CSA B125**

**ASSE1016**



Meets the American Disabilities Act Guidelines and **ANSI A117.1** Requirements for the physically challenged.



**IMPORTANT:** These measurements are subject to change or cancellation. No responsibility is assumed for use of superseded or voided pages.