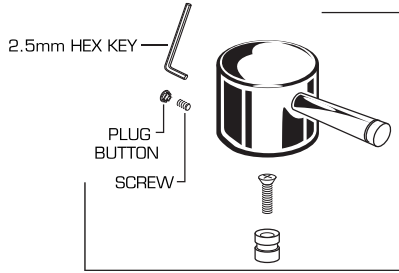


ONE MONOBLOCK LAVATORY FITTING

MODEL NUMBER

2064.101



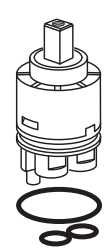
M962419-YYY0A
HANDLE KIT



607641-YYY0A
CARTRIDGE CAP

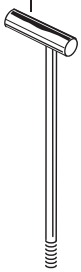


603275-0070A
CARTRIDGE NUT



A954878-0070A
CARTRIDGE

M962420-YYY0A
POP-UP ROD

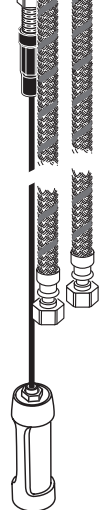


066070-YYY0A
AERATOR



M962421-YYY0A
ESCUTCHEON KIT

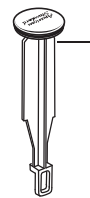
M962492-0070A
MOUNTING KIT



M952425-YYY0A
DRAIN ASSEMBLY



M919660-0020A
6" TAILPIECE
(NOT INCLUDED
WITH FAUCET)

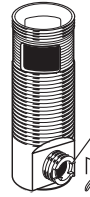


M962456-YYY0A
STOPPER
ASSEMBLY

M952430-0070A
CABLE ASSEMBLY



M962457-007A
FLANGE
ASSEMBLY



M922872-0070A
CAM SEAT INSERT

M962430-0070A
CAM ASSEMBLY



M913207-0070A
TAILPIECE INSERT



A919661-0020A
TAILPIECE



M962458-0070A
DRAIN MOUNTING KIT

Replace the "YYY" with appropriate finish code

CHROME	002
SATIN NICKEL	295



HOT LINE FOR HELP
For toll-free information and answers to your questions, call:
1 (800) 442-1902
Weekdays 8:00 a.m. to 8:00 p.m. EST
IN CANADA 1-800-387-0369 (TORONTO 1-905-306-1093)
Weekdays 8:00 a.m. to 7:00 p.m. EST

Product names listed herein are trademarks of American Standard Inc.
© American Standard Inc. 2006

M968849