

American Standard

CERAMIX™

CENTERSET LAVATORY FAUCET

Thank you for selecting American-Standard...the benchmark of fine quality for over 100 years.

To ensure that your installation proceeds smoothly—please read these instructions carefully before you begin.

Installation Instructions 2000.10X



Certified to comply with ASME A112.18.1M

M968760

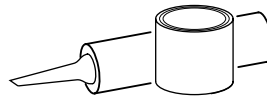
TOOLS REQUIRED



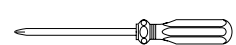
Channel Locks



Adjustable Wrench



Plumbers' Putty or Caulking



Phillips Screwdriver

CARE INSTRUCTIONS:

DO: SIMPLY RINSE THE PRODUCT CLEAN WITH CLEAR WATER. DRY WITH A SOFT COTTON FLANNEL CLOTH.

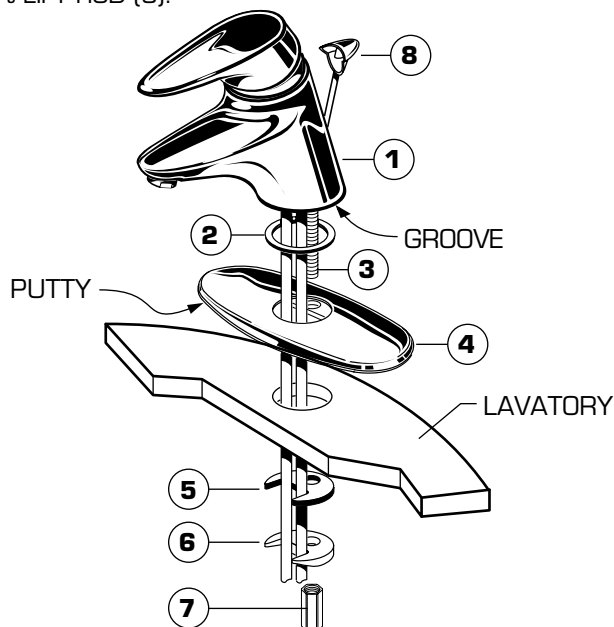
DO NOT: CLEAN THE PRODUCT WITH SOAPS, ACID, POLISH, ABRASIVES, HARSH CLEANERS, OR A CLOTH WITH A COARSE SURFACE.

1 INSTALL FAUCET

CAUTION

Turn off water at main supply.

- For 3-hole (4" centers) installation, apply Putty to underside of Escutcheon (optional 4) and place over holes in lavatory sink with tab towards back.
- Feed faucet tubes through Rubber Ring (2) and through hole in Escutcheon (optional 4) or mounting surface. Escutcheon (4) is optional on single hole lavatories. Make sure Rubber Ring (2) is seated in groove in base of Faucet (1).
- From below, push Mounting Gasket (5) and Mounting Washer (6) over Stud (3) and secure with Nut (7), pushing Faucet (1) to back of sink, so Stud (3) rests against sink hole. Before final tightening, adjust Faucet (1) and Escutcheon (4) so that they are centered.
- Insert LIFT ROD (8).

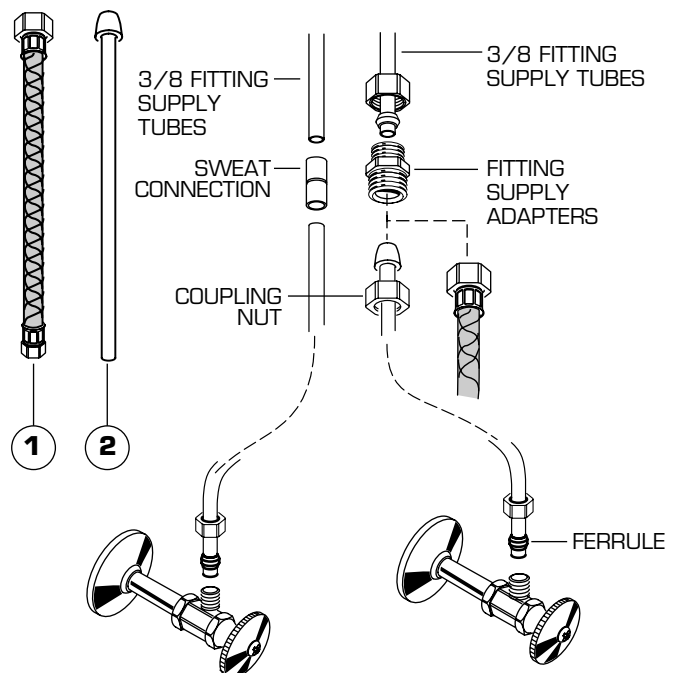


2

MAKE WATER SUPPLY CONNECTIONS

NOTE: FLEXIBLE SUPPLIES OR BULL-NOSE RISERS MUST BE PURCHASED SEPARATELY.

- Turn off hot and cold water supplies before beginning.
- Carefully bend copper supplies on fitting to meet water supply lines using the palms of the hands to avoid kinking.
- Connect HOT water supply line to left tube, and COLD water supply line to right tube using appropriate connectors.
- Connect water supply to FAUCET with 1/2" IPS FLEXIBLE SUPPLIES (1) or 3/8" O.D. BULL-NOSE RISERS (2). Use adjustable wrench to tighten connections. Do not over tighten. Be careful not to kink copper supply when bending. Use tubing cutter to cut to proper length.



3 INSTALL POP-UP DRAIN

- Push Tail piece (11) down into Trap (C) (threaded end up).
- Thread Locknut (5), Washer (4) and Gasket (3) (Bevel side up) onto Drain Body (10).
- Apply a bead of Putty (D) to underside of Flange (2).
- Feed Drain Body (10) up through Sink (A) and thread the Flange (2) fully onto Drain Body (10).
- Tighten Locknut (5) firmly, keeping the pivot rod hole pointed towards the back of the sink.
- Assemble Pivot Rod (9) as shown in Figure-4B. Notice the position of the Concave Washer (G).
- Insert Pivot Rod (9) into Drain Body (10) and tighten Pivot Nut (F).
- Push Tailpiece Insert (12) into Tailpiece (11) and push Tailpiece (11) up and thread tightly into Drain Body (10).
- Position Extension Rod (7) onto Pop-Up Rod (E) and tighten Thumbscrew (6).
- Remove one end of Clip (8) from Pivot Rod (9) by squeezing ends together while sliding.
- Insert Pivot Rod (9) into second or third hole in Extension Rod (7) and reassemble Clip (8).
- Drop Stopper (1) into Drain Body (10).
- Adjust stopper height by repositioning Extension Rod (7) and tightening Thumbscrew (6).

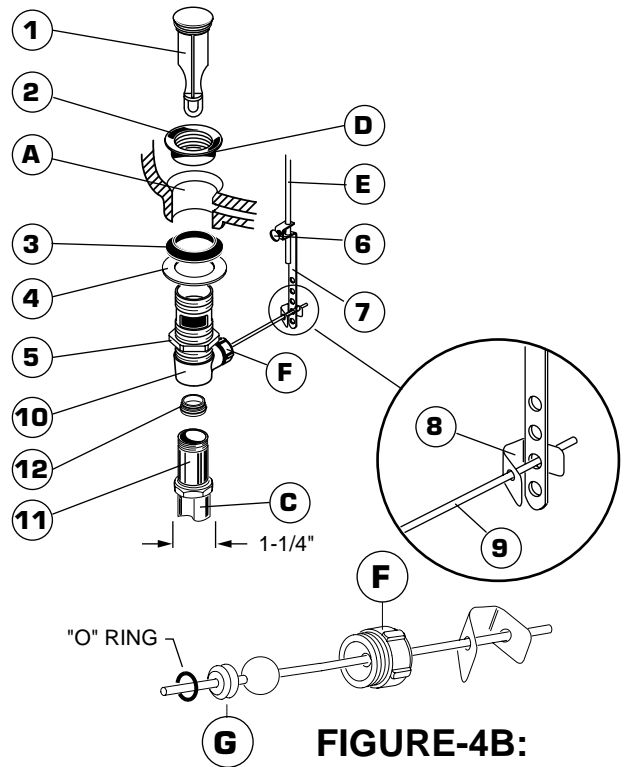
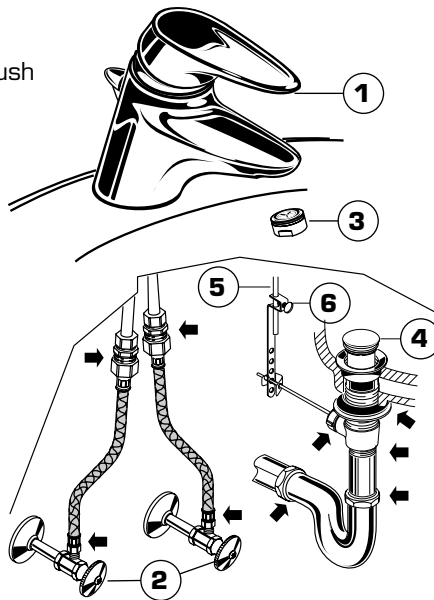


FIGURE-4B:

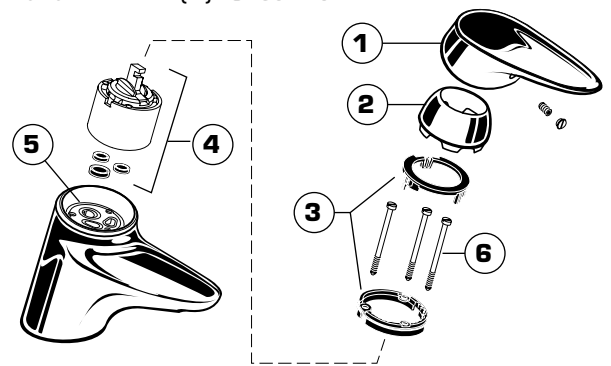
4 TEST INSTALLED FITTING

- With HANDLE (1) in OFF position, turn on WATER SUPPLIES (2) and check all connections for leaks.
- Remove AERATOR (3).
- Operate HANDLE (1) to flush water lines thoroughly.
- Replace AERATOR (3).
- Operate Pop-Up and fill lavatory with water. Check that DRAIN STOPPER (4) makes a good seal and retains water in lavatory.
- Adjust stopper height by repositioning Pop-Up ROD (5) and tightening THUMBSCREW (6).
- Release DRAIN STOPPER (4) and check all drain connections and "P" trap for leaks. Tighten if necessary.



5 SERVICE

- If faucet drips, operate handle several times from "off" to "on". Do not apply excessive force.
- Clogged CARTRIDGE inlets may cause reduced flow in "full on" hot or cold. To clean inlets, first turn off water supply, then:
 - Remove HANDLE (1), CAP (2), HOT LIMIT STOP (3) and CARTRIDGE (4).
 - Clean inlets and MANIFOLD (5).
- Reassemble CARTRIDGE (4), alternately tightening SCREWS (6). Replace HOT LIMIT STOP (3), CAP (2) and HANDLE (1). Check flow.

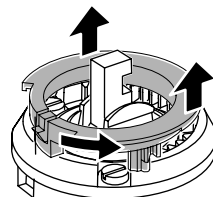


6 ADJUST HOT LIMIT STOP

By restricting handle rotation and limiting the amount of hot water allowed to mix with the cold, the HOT LIMIT SAFETY STOP reduces risk of accidental scalding. To set the maximum hot water temperature of your faucet, all you need to do is adjust the setting on the HOT LIMIT SAFETY STOP.

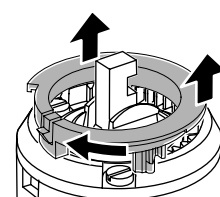
- Remove HANDLE, CAP and HOT LIMIT STOP. Follow "A" or "B" to adjust maximum discharge temperature.

"A"
PRY UPWARD TO UNLOCK
AND ROTATE COUNTER-
CLOCKWISE ONE CLICK



ADJUSTMENT WHEN
WATER IS TOO HOT

"B"
PRY UPWARD TO UNLOCK
AND ROTATE CLOCKWISE



ADJUSTMENT WHEN
WATER IS TOO COLD

M968760

American Standard

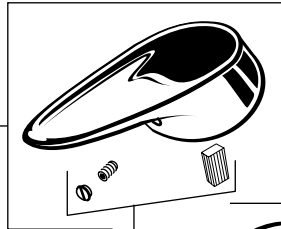
CERAMIX™

CenterSet Faucets

MODEL NUMBER

2000.10X

M961741-YYY0A
HANDLE KIT



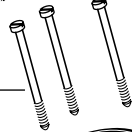
030126-0070A
HANDLE INDEX SET



A907086-YYY0A
CAP



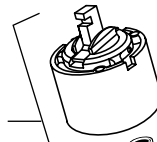
023593-0070A
HOT LIMIT STOP



023603-0070A
CARTRIDGE SCREWS



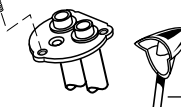
023529-0070A
CARTRIDGE KIT



M961745-0070A
MANIFOLD KIT



M961747-YYY0A
LIFT ROD



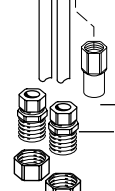
A922869-YYY0A
AERATOR



M907671-YYY0A
ESCUTCHEON KIT



M961748-0070A
MOUNTING KIT

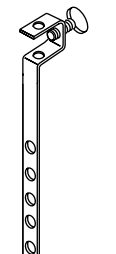


005474-0070A
ADAPTERS

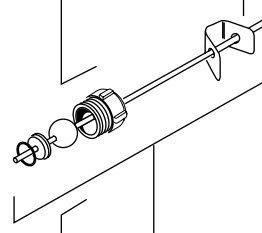
024220-0070A
SUPPLY NUTS



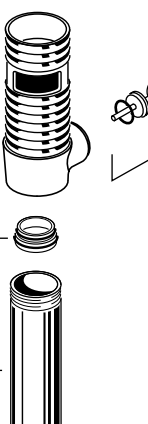
072574-0070A
EXTENSION ROD



070847-0070A
CLIP



066118-0070A
PIVOT ROD

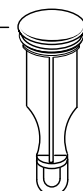


Replace the "YYY" with appropriate finish code

CHROME	002
WHITE	020
BONE	021
WHITE/CHROME	025
BLACK NICKEL	062
POLISHED BRASS	099
SATIN	295
SATIN/POL. BRASS	297
CHROME/POL. BRASS	299

953450-YYY0A
COMPLETE DRAIN ASSEMBLY

066116-YYY0A
DRAIN STOPPER



066117-YYY0A
FLANGE KIT

FLANGE



GASKET



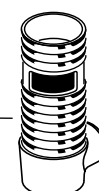
WASHER



LOCKNUT



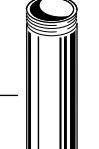
900984-0070A
DRAIN BODY



M961711-0070A
TAILPIECE INSERT



070532-0040A
TAILPIECE



HOT LINE FOR HELP
For toll-free information and answers to your questions, call:
1 (800) 223-0068
Weekdays 8:00 a.m. to 8:00 p.m. EST

IN CANADA 1-800-387-0369 (TORONTO 1-905-306-1093)
Weekdays 8:00 a.m. to 7:00 p.m. EST

Product names listed herein are trademarks of American Standard Inc.
©American Standard Inc. 2002

M968760