

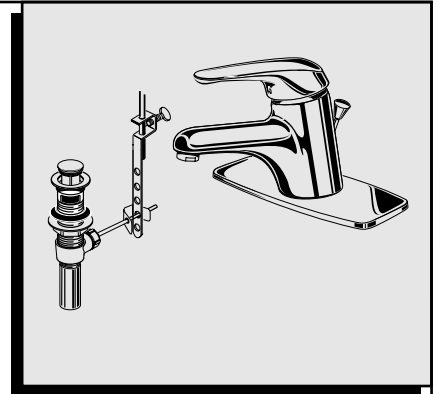
American Standard

Seva™

LAVATORY FAUCET

Installation Instructions

1480.101
1480.104

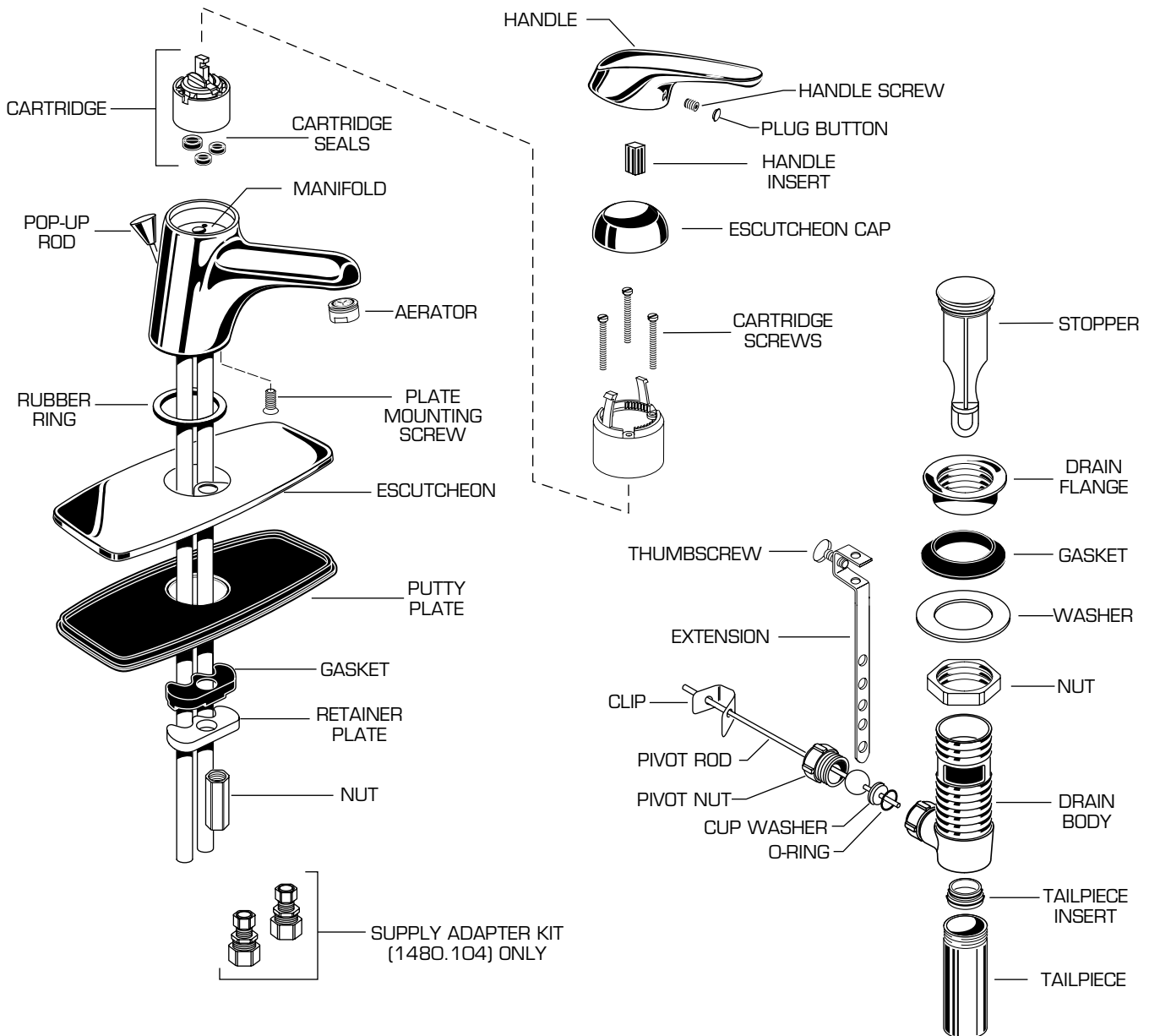


Certified to comply with ANSI A112.18.1

Thank you for selecting American-Standard...the benchmark of fine quality for over 100 years.

To ensure that your installation proceeds smoothly—please read these instructions carefully before you begin.

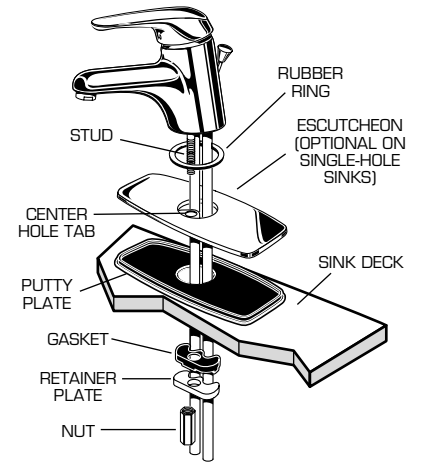
M968303/60303C



1 FAUCET INSTALLATION

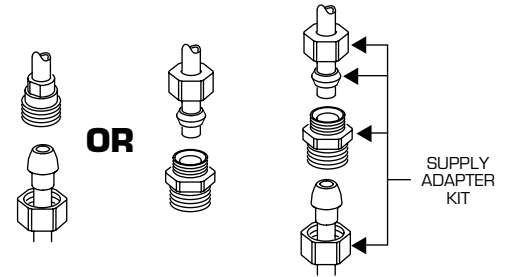
CAUTION Turn off hot and cold water supplies before beginning.

- For 3-hole (4" centers) installation, put PUTTY PLATE onto SINK so it fits into the two outside holes.
- Place ESCUTCHEON over PUTTY PLATE with the center hole tab towards the front.
- Feed faucet tubes through RUBBER RING and through DECK/ESCUTCHEON so STUD goes through CENTER HOLE.
- From below, push GASKET and RETAINER PLATE over stud and secure with NUT, pushing faucet to front of sink, so STUD rests against sink hole. Before final tightening, adjust faucet and escutcheon so that they are centered side to side.
- Carefully bend and/or cut supply tubes and connect left tube to HOT water and right tube to COLD water supply using appropriate connectors.



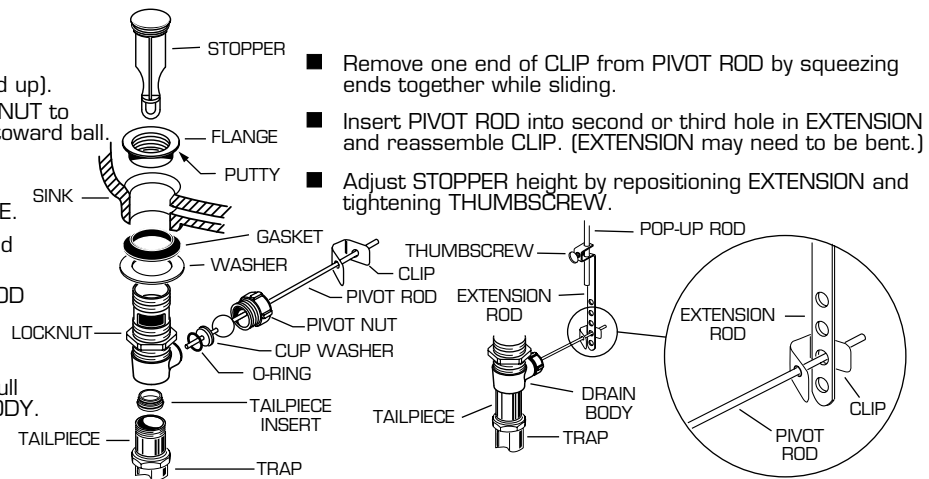
2 CONNECT SUPPLIES

- Carefully bend copper supplies to meet water supply lines using the palms of the hands to avoid kinking.
- Connect HOT water supply line to LEFT tube, and COLD water supply line to RIGHT tube using appropriate connectors.
- On the 1480.104 version, 2 SUPPLY ADAPTERS are provided. Connect the copper tube to the supply riser pipe using the connector. See Diagram.
- For the 1480.100, use appropriate connectors.



3 INSTALL POP-UP DRAIN

- Push TAILPIECE down into TRAP (threaded end up).
- Assemble O-RING, WASHER, PIVOT ROD and NUT to DRAIN BODY. Concave side of cup washer is toward ball.
- Thread LOCKNUT, WASHER and GASKET onto DRAIN BODY.
- Apply a bead of PUTTY to underside of FLANGE.
- Feed DRAIN BODY up through SINK and thread FLANGE fully onto BODY.
- Tighten LOCKNUT firmly, keeping the PIVOT ROD pointed towards the back of the SINK.
- Drop STOPPER into DRAIN BODY.
- Push TAILPIECE INSERT onto TAILPIECE and pull TAILPIECE up and thread tightly into DRAIN BODY.
- Position EXTENSION ROD onto POP-UP ROD and tighten THUMBSCREW.



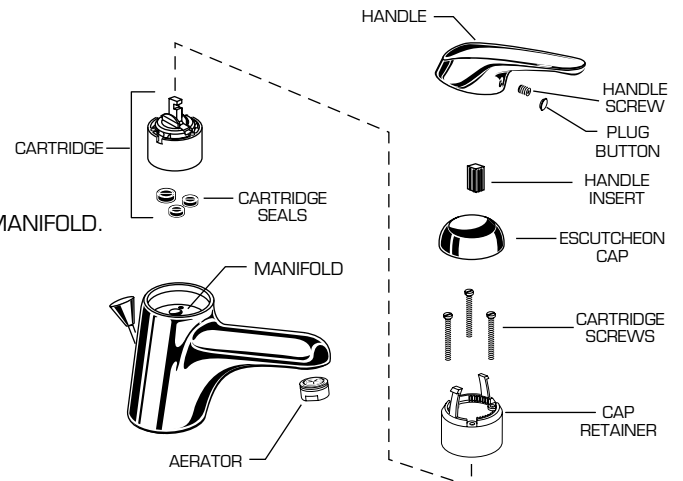
- Remove one end of CLIP from PIVOT ROD by squeezing ends together while sliding.
- Insert PIVOT ROD into second or third hole in EXTENSION and reassemble CLIP. (EXTENSION may need to be bent.)
- Adjust STOPPER height by repositioning EXTENSION and tightening THUMBSCREW.

4 TEST FAUCET

- Remove AERATOR.
- Turn on water supplies and check for leaks.
- Operate HANDLE up and down, and left and right and check for proper operation.
- Flush lines and reinstall AERATOR.

5 SERVICE

- If faucet drips, operate handle several times from "off" to "on". Do not apply excessive force.
- Clogged CARTRIDGE inlets may cause reduced flow in "full on" hot or cold. To clean inlets, first turn off water supply, then:
 - Remove HANDLE, CAP, and CARTRIDGE. Clean inlets and top of MANIFOLD.
 - Reassemble CARTRIDGE, alternately tightening screws. Replace CAP and HANDLE. Check flow.



HOT LINE FOR HELP
 For toll-free information and answers to your questions, call:
 1 (800) 223-0068
 Weekdays 8:00 a.m. to 7:00 p.m. Eastern Time
 IN CANADA 1-800-387-0369 (TORONTO 1-416-536-5609)

Product names listed herein are trademarks of American Standard Inc.
 ©American Standard Inc. 1996

M968303/60303C