

# Installation and Assembly - Concrete fasteners

Model: ACC203, ACC204

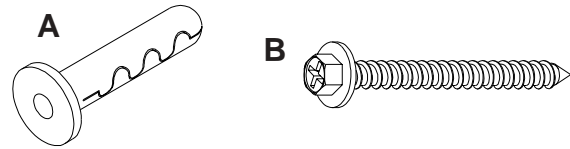
**Note:** Read entire instruction sheet before you start installation and assembly.



This product is intended for use with UL Listed products and must be installed by a qualified professional installer.

## Parts List

| PART #        | QTY. | DESCRIPTION                    |
|---------------|------|--------------------------------|
| A 590-0097    | 3    | concrete anchors (ACC203 ONLY) |
|               | 4    | concrete anchors (ACC204 ONLY) |
| B 5S1-015-C03 | 1    | wood screw (ACC204 ONLY)       |



Before you start make sure all parts listed are included with your product.

| Fastener Kit | Max. Load Concrete |                    | Max. Load Cinder Block |                    |
|--------------|--------------------|--------------------|------------------------|--------------------|
|              | Per Anchor         | Per Kit            | Per Anchor             | Per Kit            |
| ACC203       | 450 lb (204.1 kg)  | 1350 lb (612.3 kg) | 250 lb (113.4 kg)      | 750 lb (340.2 kg)  |
| ACC204       | 450 lb (204.1 kg)  | 1800 lb (816.5 kg) | 250 lb (113.4 kg)      | 1000 lb (453.6 kg) |

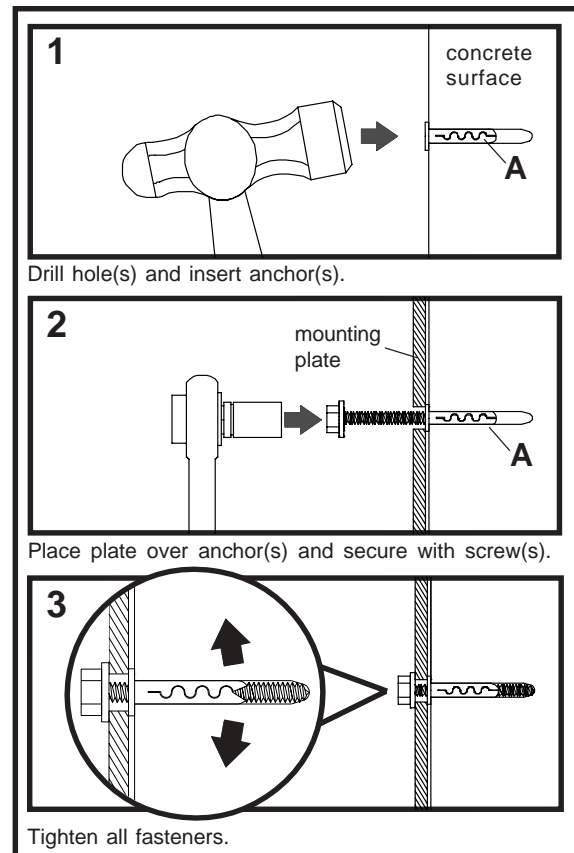
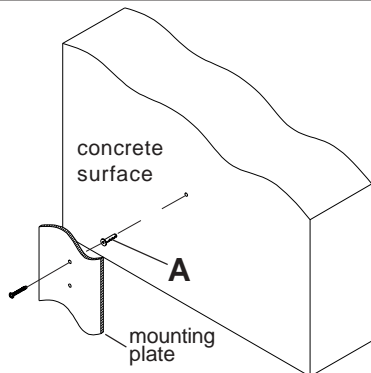
## ⚠ WARNING

- When installing Peerless wall mounts on cinder block, verify that you have a minimum of 1-3/8" of actual concrete surface in the hole to be used for the concrete anchors. Do not drill into mortar joints! Be sure to mount in a solid part of the block, generally 1" minimum from the side of the block. Cinder block must meet ASTM C-90 specifications. It is suggested that a standard electric drill on slow setting is used to drill the hole instead of a hammer drill to avoid breaking out the back of the hole when entering a void or cavity.
- Concrete must be 2000 psi density minimum. Lighter density concrete may not hold concrete anchor.
- Make sure that the wall will safely support four times the combined load of the equipment and all attached hardware and components.

- 1** For Concrete Surfaces use mounting plate, making sure that it is level, as a template to mark holes. Drill 1/4" (6 mm) dia. holes to a minimum depth of 2.5" (64 mm). Concrete must be 2000 psi density minimum. Insert anchors (A) in holes flush with wall as shown (right). Place mounting plate over anchors (A) and secure with #14 x 2.5" (6 mm x 65 mm) wood screws. Tighten all fasteners.

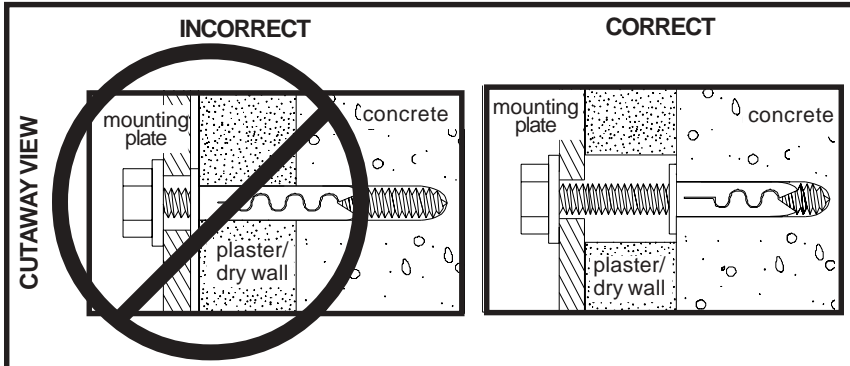
## ⚠ WARNING

- Tighten concrete anchor bolts firmly, but do not overtighten. Overtightening can damage the bolts, greatly reducing their holding power.
- Never tighten in excess of 80 in. • lb (9 N.M.).



## ⚠ WARNING

- Concrete anchors are **not** intended for attachment to concrete wall covered with a layer of plaster, drywall, or other finishing material. If mounting to concrete wall covered with plaster/drywall is unavoidable, plaster/drywall (up to 5/8" thick) must be counterbored as shown below. If plaster/drywall is thicker than 5/8", custom fasteners must be supplied by installer.



**Note:** Wood screw (B) included with ACC 204 for mounts with only three wood screws.