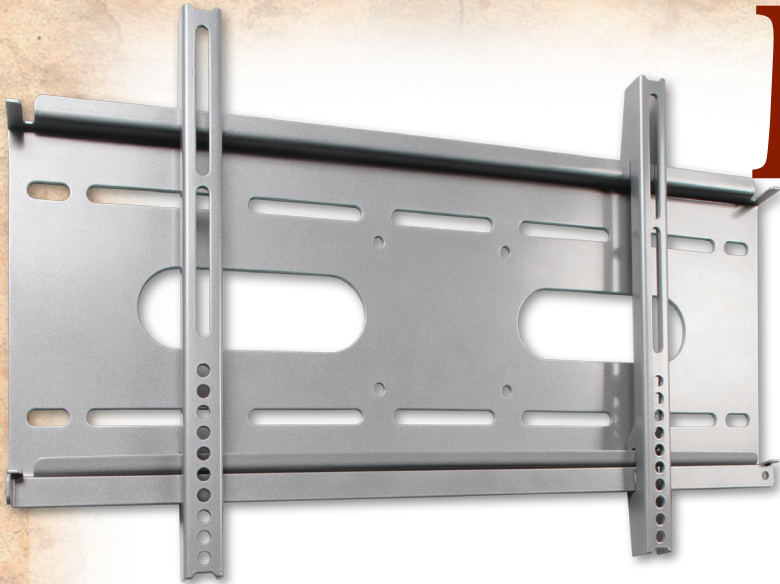


MUSTANG™

MV-STAT2



Mustang's MV-STAT2 is designed to be a versatile medium format flat screen mount. The STAT2 provides lateral shift of the screen to compensate for off center wall studs. The STAT2 is also a low profile mount, allowing you the beauty of your flat screen hanging on your wall without having the mount itself becoming a focal point. The VESA compatible mounting brackets are easy to install and fit any panel that conforms to industry standards. Simple, this sturdy bracket there for years to come.

- Solid heavy-gauge steel construction & durable powder coated finish
- Low-profile: installs only 6 cm (2.4") from wall
- Life-and-Hook design makes installation fast and easy
- Compatible with all holes patterns including VESA standard
- Optional Parts: 4pcs. Adaptor set (VM-A01) makes it fit TV size up to 42"
- Horizontal adjustment available even after installation
- Holds 26"- 32" flat panels
- Weight capacity: 123 lbs. (56 kg)
- Adjustable wide range tilt: +15°/-15°
- Silver
- Includes installation guide and hardware kit with advanced theft proof screw design
- Master carton weight: 45 lbs (20.69 kg)
- Master carton dimensions: 24"L x 9.6" W x 8.8"H
- Shipping box weight: 25 lbs (11.7 kg)
- Shipping box dimensions: 24"L x 9.0"W x 1.4"H
- UPC code: 94922590541

HARDWARE KIT



Bag 1

- (x4) M4x12 Bolt
- (x4) M4x30 Bolt
- (x4) M4 Lock Washer

Bag 2

- (x4) M5x12 Bolt
- (x4) M5x30 Bolt
- (x4) M5 Lock Washer

Bag 3

- (x4) M6x12 Bolt
- (x4) M6x35 Bolt
- (x4) M6 Lock Washer

Bag 4

- (x4) M8x16 Bolt
- (x4) M8x40 Bolt
- (x4) M8 Lock Washer

Bag 5

- (x4) M4/M5 Spacer
- (x4) M6/M8 Spacer
- (x4) M4/M5 Washer
- (x4) M6 Washer

Bag 6

- (x6) Bubble Level System
- (x6) 3" Lag Bolt
- (x6) Washer

Bag 7

- (x6) M12x60 Concrete Anchors

Tools Needed

- Phillips head screw driver
- Stud finder for drywall installation
- 5/16" socket and wrench
- Electric drill and 5/16" (8mm) masonry bit for concrete/brick installation

