

**VanGuard Endeavor ED**

Endeavor ED binoculars are designed for sharp viewing, featuring advanced optical technology for sharpness and clarity. The ED glass reduces color dispersion and enhances color resolution and contrast. They're waterproof and fogproof with an ergonomic, open-bridge design for comfortable use, a wide view angle, BaK4 roof prisms, anti-reflection coating, large focus adjustment wheel and long eye relief. Available in 8x42 and 10x42. [www.vanguardworld.com](http://www.vanguardworld.com); (800) 875-3322

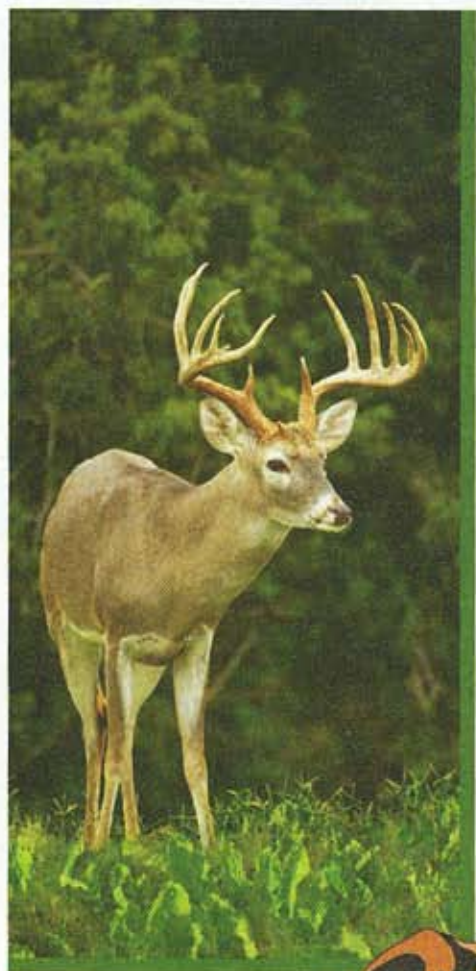


**Carson 3D Series Binoculars**

The Carson 3D Series has been designed for exceptional user comfort. They are lightweight binoculars with precisely placed thumb grooves, "just right" texturing and all-over body ergonomics. The advanced optical technology produces advanced depth and dimension. The 3D Series features a high-definition optical coating technology that significantly enhances light gathering capabilities for brighter, sharper images in low-light conditions. The crystal clear BAK-4 prisms are fully multicoated and phased corrected, and are nitrogen filled/o-ring sealed to provide the ultimate in water and fog proof performance.



[www.carsonoptical.com](http://www.carsonoptical.com);  
(800) 9-OPTICS



Sugarbeets are a hardy vegetable that make a great addition to any wildlife plot. Deer browse the protein-rich leaves during the spring and summer. As the weather becomes cooler, deer are attracted to the sweet, carbohydrate-rich tap roots. Sugarbeets have the highest digestibility of any forage and are an excellent source of both protein and energy.

**If attracting and growing more and larger deer is your goal, add some BuckLunch to your wildlife plot.**

For more information

>>> 1-888-373-0667 toll free  
[www.bucklunch.com](http://www.bucklunch.com)



*We have the seeds for your wildlife plot needs*

**Steiner Nighthunter XP**



Steiner has released the new Nighthunter XP binoculars for 2011 that offer the brightest array of HD glass the company has ever put into a roof-prism

binocular. Available in four full-size models — two 42mm and two 56mm — that not only bring your subject closer, but the images appear considerably brighter with more contrast and natural HD color than most human eyes have ever seen. Features include exceptional light transmission, water-repelling NANO-Protection lenses (for reduced fogging), durable rubber armoring, purged and pressurized to 14 psi with dry nitrogen and argon gas, and 30-year limited warranty.

[www.steiner-binoculars.com](http://www.steiner-binoculars.com);  
(970) 356-1670