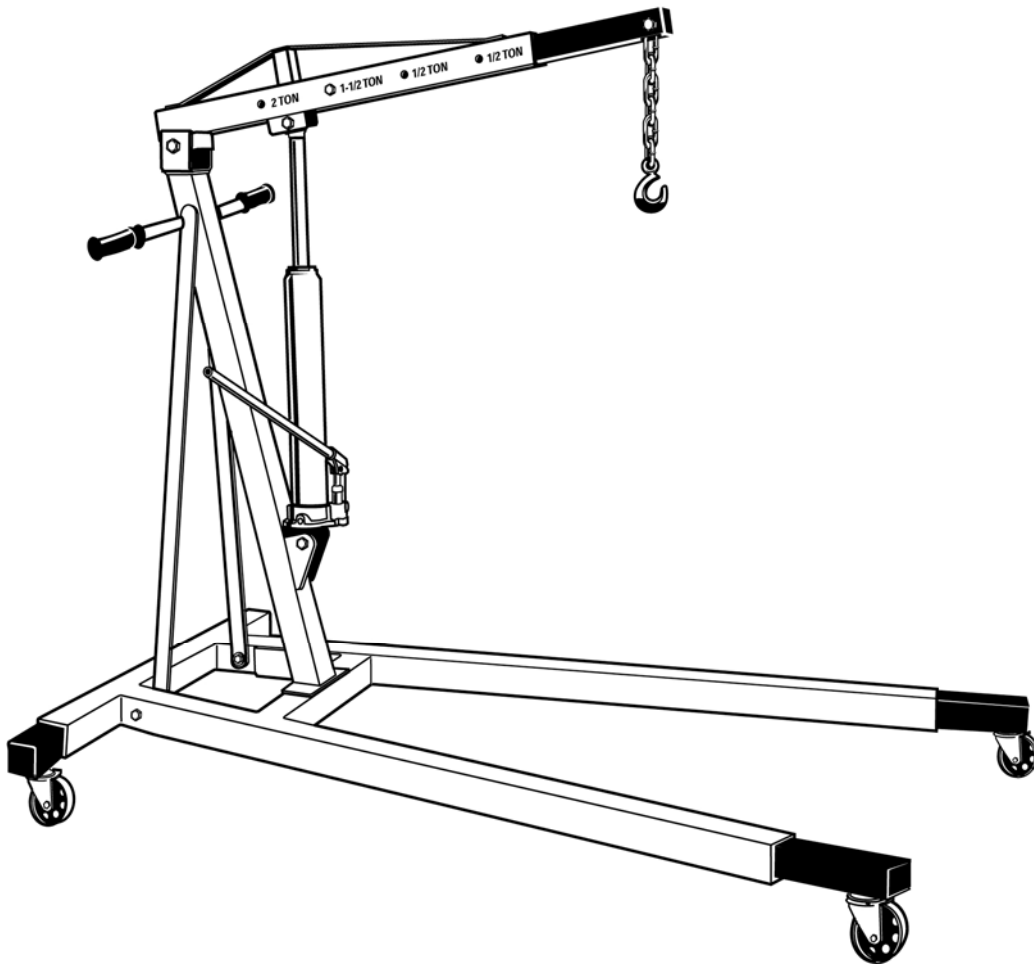


JET[®]

Operating Instructions and Parts Manual 2-Ton Hydraulic Shop Crane

Model: JHC-200X



WALTER MEIER (Manufacturing) Inc.
427 New Sanford Road
LaVergne, Tennessee 37086
Ph.: 800-274-6848
www.waltermeier.com

Part No. M-106200
Revision B2 02/2012
Copyright © 2012 Walter Meier (Manufacturing) Inc.

Warranty and Service

Walter Meier (Manufacturing) Inc., warrants every product it sells. If one of our tools needs service or repair, one of our Authorized Service Centers located throughout the United States can give you quick service. In most cases, any of these Walter Meier Authorized Service Centers can authorize warranty repair, assist you in obtaining parts, or perform routine maintenance and major repair on your JET® tools. For the name of an Authorized Service Center in your area call 1-800-274-6848.

MORE INFORMATION

Walter Meier is consistently adding new products to the line. For complete, up-to-date product information, check with your local Walter Meier distributor, or visit waltermeier.com.

WARRANTY

JET products carry a limited warranty which varies in duration based upon the product (MW = Metalworking, WW = Woodworking).

90 DAY WARRANTY	1 YEAR WARRANTY	Body Repair Kits Bottle Jacks Cable Pullers Cold Saws Hoists-Air Hoists-Electric Metal forming Mill/Drills Milling Machines MW Bandsaws MW Drill Presses MW Finishing Equipment MW Lathes MW Precision Vises	2 YEAR WARRANTY	Palet Trucks Rigging Equip. Service Jacks Stackers Surface Grinders Tapping Trolleys-Air Trolleys-Electric Web Slings Winches-Electric	3 YEAR WARRANTY	Beam Clamps Chain Hoist-Manual Lever Hoists Pullers-JCH Models Scissor Lift Tables Screw Jacks Trolleys-Geared Trolleys-Plain Winches-Manual WW Air Filtration WW Bandsaws WW Buffers	5 YEAR WARRANTY	WW Drill Presses WW Dust Collectors WW Dust Filters WW Dust Fittings WW Jointers WW Lathes WW Planers WW Sanders WW Shapers WW Tablesaws	LIFE LIFETIME WARRANTY	Fastening Tools Mechanics Hand Tools Striking Tools Vises (no -precision) Clamps
<i>Warranty reverts to 1 Year Warranty if woodworking (WW) products listed above are used for industrial or educational purposes.</i>										

WHAT IS COVERED?

This warranty covers any defects in workmanship or materials subject to the exceptions stated below. Cutting tools, abrasives and other consumables are excluded from warranty coverage.

WHO IS COVERED?

This warranty covers only the initial purchaser of the product.

WHAT IS THE PERIOD OF COVERAGE?

The general JET warranty lasts for the time period specified in the product literature of each product.

WHAT IS NOT COVERED?

Five Year Warranties do not cover woodworking (WW) products used for commercial, industrial or educational purposes. Woodworking products with Five Year Warranties that are used for commercial, industrial or education purposes revert to a One Year Warranty. This warranty does not cover defects due directly or indirectly to misuse, abuse, negligence or accidents, normal wear-and-tear, improper repair or alterations, or lack of maintenance.

HOW TO GET SERVICE

The product or part must be returned for examination, postage prepaid, to a location designated by us. For the name of the location nearest you, please call 1-800-274-6848.

You must provide proof of initial purchase date and an explanation of the complaint must accompany the merchandise. If our inspection discloses a defect, we will repair or replace the product, or refund the purchase price, at our option. We will return the repaired product or replacement at our expense unless it is determined by us that there is no defect, or that the defect resulted from causes not within the scope of our warranty in which case we will, at your direction, dispose of or return the product. In the event you choose to have the product returned, you will be responsible for the shipping and handling costs of the return.

HOW STATE LAW APPLIES

This warranty gives you specific legal rights; you may also have other rights which vary from state to state.

LIMITATIONS ON THIS WARRANTY

WALTER MEIER (MANUFACTURING) INC., LIMITS ALL IMPLIED WARRANTIES TO THE PERIOD OF THE LIMITED WARRANTY FOR EACH PRODUCT. EXCEPT AS STATED HEREIN, ANY IMPLIED WARRANTIES OR MERCHANTABILITY AND FITNESS ARE EXCLUDED. SOME STATES DO NOT ALLOW LIMITATIONS ON HOW LONG THE IMPLIED WARRANTY LASTS, SO THE ABOVE LIMITATION MAY NOT APPLY TO YOU.

WALTER MEIER SHALL IN NO EVENT BE LIABLE FOR DEATH, INJURIES TO PERSONS OR PROPERTY, OR FOR INCIDENTAL, CONTINGENT, SPECIAL, OR CONSEQUENTIAL DAMAGES ARISING FROM THE USE OF OUR PRODUCTS. SOME STATES DO NOT ALLOW THE EXCLUSION OR LIMITATION OF INCIDENTAL OR CONSEQUENTIAL DAMAGES, SO THE ABOVE LIMITATION OR EXCLUSION MAY NOT APPLY TO YOU.

Walter Meier sells through distributors only. The specifications in Walter Meier catalogs are given as general information and are not binding. Members of Walter Meier reserve the right to effect at any time, without prior notice, those alterations to parts, fittings, and accessory equipment which they may deem necessary for any reason whatsoever. JET® branded products are not sold in Canada by Walter Meier.

Warnings

1. Study and understand all operating instructions before operating crane.
2. Do not exceed the rated capacity of the crane (position 1, 1/2 ton; position 2, 1 ton; position 3, 1-1/2 ton; position 4, 2 ton. See Figure 1.
3. Assure that the load is not allowed to drop suddenly or swing during transporting.
4. Make sure that boom is fully lowered before adding oil to unit reservoir.
5. This shop crane is designed for use only on hard, level surfaces capable of sustaining the load. Use on other than hard level surfaces can result in shop crane instability and possible loss of load.
6. Slowly lower boom and load to the lowest possible position before transporting load.
7. Assemble crane according to the owner's manual. Make sure all bolts and nuts are tight before placing crane into operation.
8. Do not use crane for any other purpose than for which it was designed and intended.
9. Crane legs must always extend beyond the boom and each leg must be extended to the same length.
10. Do not extend any leg farther than red warning indicator line on each leg.
11. Boom extension hardware must be secure before attempting to lift any load.
12. Never place any part of the body under the load or crane while in use.
13. Never use the crane as the only means of support. Always move the load to a stable platform or work surface before attempting any work.
14. Keep others away from the area while the crane is in operation.
15. Before attempting to raise load, make sure it is securely fastened and safety latches are secure.
16. Do not operate crane with twisted or kinked chain.
17. Do not remove labels from crane.
18. Never use crane for lifting people or loads over people.
19. Do not remove ram and use separately for any purpose.
20. Never operate the crane under the influence of medication, drugs or alcohol.
21. Failure to comply with all of these warnings may result in loss of load, damage to the shop crane, and/or failure resulting in personal injury or property damage.

Familiarize yourself with the following safety notices used in this manual:

CAUTION This means that if precautions are not heeded, it may result in minor injury and/or possible machine damage.

WARNING This means that if precautions are not heeded, it may result in serious injury or possibly even death.

Specifications

Model Number..... JHC-200X
 Stock Number 106200

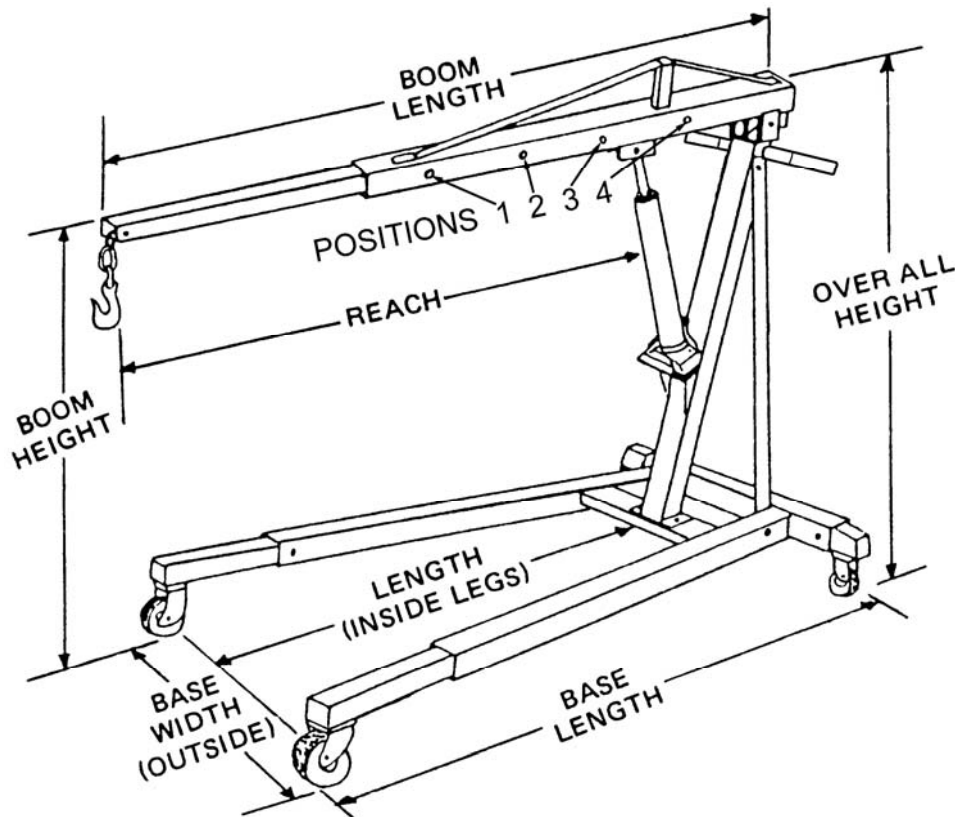


Figure 1

The specifications in this manual are given as general information and are not binding. Walter Meier (Manufacturing) Inc., reserves the right to effect, at any time and without prior notice, changes or alterations to parts, fittings, and accessory equipment deemed necessary for any reason whatsoever.

CAPACITY (TONS)	BOOM HEIGHT		BOOM LENGTH	REACH	OVERALL HEIGHT	BASE LENGTH		BASE WIDTH (OUTSIDE)		LENGTH INSIDE LEGS		WHEEL DIAMETER	CHAIN SIZE	NET WEIGHT (LBS)
	MAX	MIN				MAX	MIN	MAX	MIN	MAX	MIN			
1/2 T Position 1	92-1/2"	3"	81"	60-1/2"	56-3/8"	94-1/2"	63-1/4"	37"	31"	76"	44-3/4"	3-1/2"	.375"x1.57"x7"	273 lbs.
1T Position 2	86-3/4"	7-3/4"	72"	51-1/2"	56-3/8"	94-1/2"	63-1/4"	37"	31"	76"	44-3/4"	3-1/2"	.375"x1.57"x7"	273 lbs.
1-1/2 T Position 3	81"	12-1/2"	63"	42-1/2"	56-3/8"	94-1/2"	63-1/4"	37"	31"	76"	44-3/4"	3-1/2"	.375"x1.57"x7"	273 lbs.
2 T Position 4	75-1/4"	17-1/4"	54"	33-1/2"	56-3/8"	94-1/2"	63-1/4"	37"	31"	76"	44-3/4"	3-1/2"	.375"x1.57"x7"	273 lbs.

⚠ WARNING Read and understand the entire contents of this manual before attempting assembly or operation! Failure to comply may cause serious injury!

Assembly Instructions

Note: Refer to parts breakdown for part numbers found in parenthesis (#):

1. Slide short extension legs (03) into the rear support of base (01). Tighten bolts to hold in place.
2. Slide long extension legs (08) into front supports of base (01). Tighten bolts to hold in place.
3. Connect post (10) to base (01) with two M12 x 25 hex cap bolts (09) and two M12 nuts (02).
4. Attach supports (11) to base (01) and top of post (10) using three M12 x 100 hex cap bolts and three M12 nuts (15). Tighten firmly.
5. Connect boom (13) to post (10) using one M20 x 125 hex cap bolt (14) and one M20 nut (15).
6. Slide boom extension (16) into boom (13) and fasten with one adjustment pin (26) and one hitch pin (27).
7. Bolt lower portion of ram (21) to post (10) using one M16 x 100 hex cap bolt (17) and one M16 nut (18).
8. Bolt upper portion of ram (21) to boom (13) using one M16 x 75 (22) hex cap bolt and one M16 nut (18).
9. Insert small covers (28) into the short extension legs (03), long extension legs (08), and boom extension (16). Insert big cover (29) into back end of boom (13).

Operation

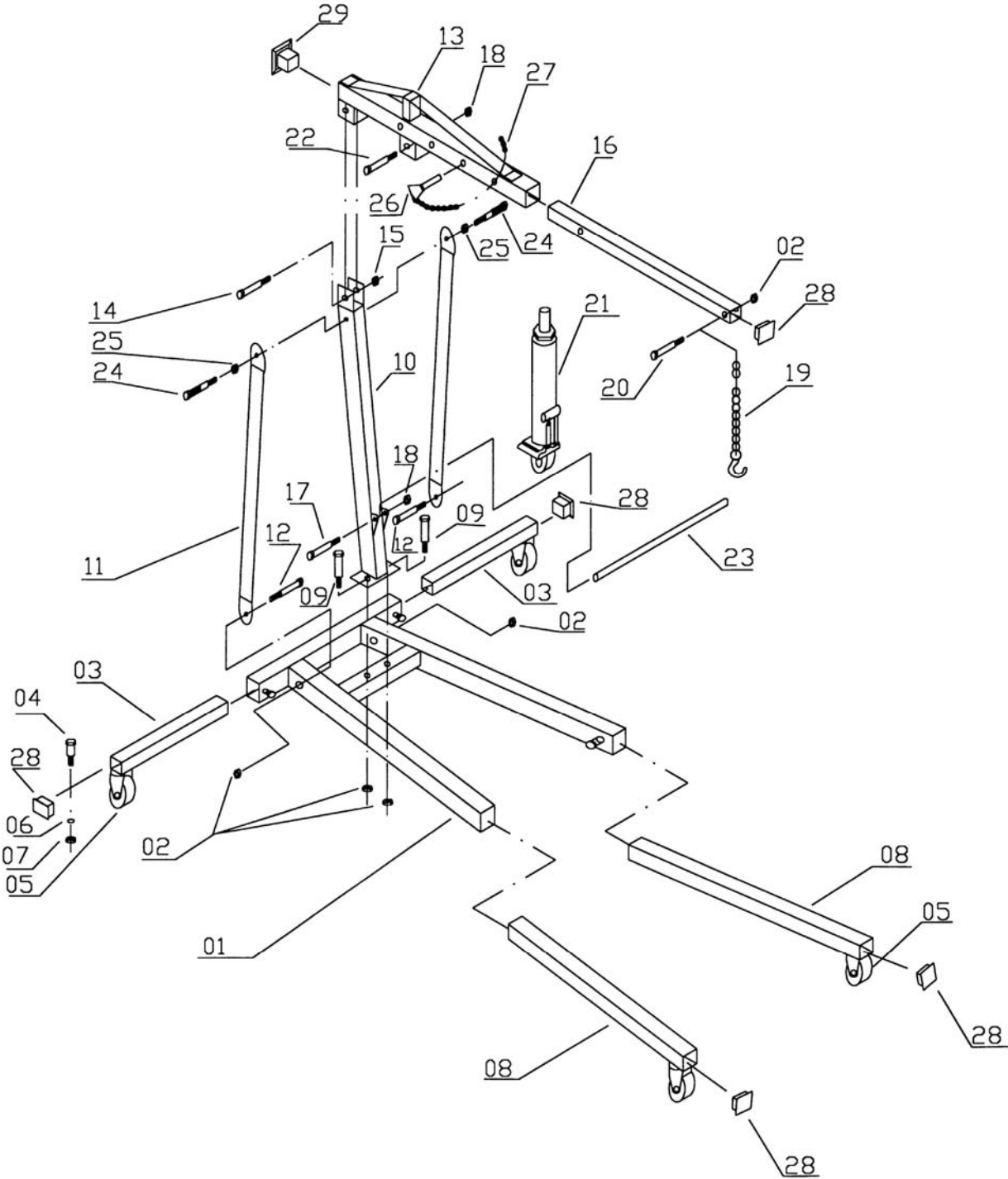
1. Load to be lifted must be securely attached with slings or chain of adequate size and strength. Before lifting the load, be sure load cannot twist, or fall from attachment.
2. Move crane into position. Legs must be extended out beyond the boom extension.
3. Close hydraulic valve at base of ram by inserting groove in handle into valve, and turning clockwise until tight.
4. Place slings, or chains in center of hook and make sure safety latch is securely latched.
5. Slowly raise load to desired height by inserting handle into ram and pumping handle. Be careful to note if the load wants to shift, and keep load from rotating or swinging.
6. Move load to desired location by rolling crane assembly. Use caution so that load does not swing or rotate.
7. Carefully lower load to desired location by inserting ram handle into valve at base of ram, and slowly turning counter-clockwise. Do not lower too quickly, and confirm load is secure once lowered fully.

Parts

Ordering Replacement Parts

To order parts or reach our service department, call 1-800-274-6848 Monday through Friday (see our website for business hours, www.walteremeier.com). Having the Model Number and Serial Number of your machine available when you call will allow us to serve you quickly and accurately.

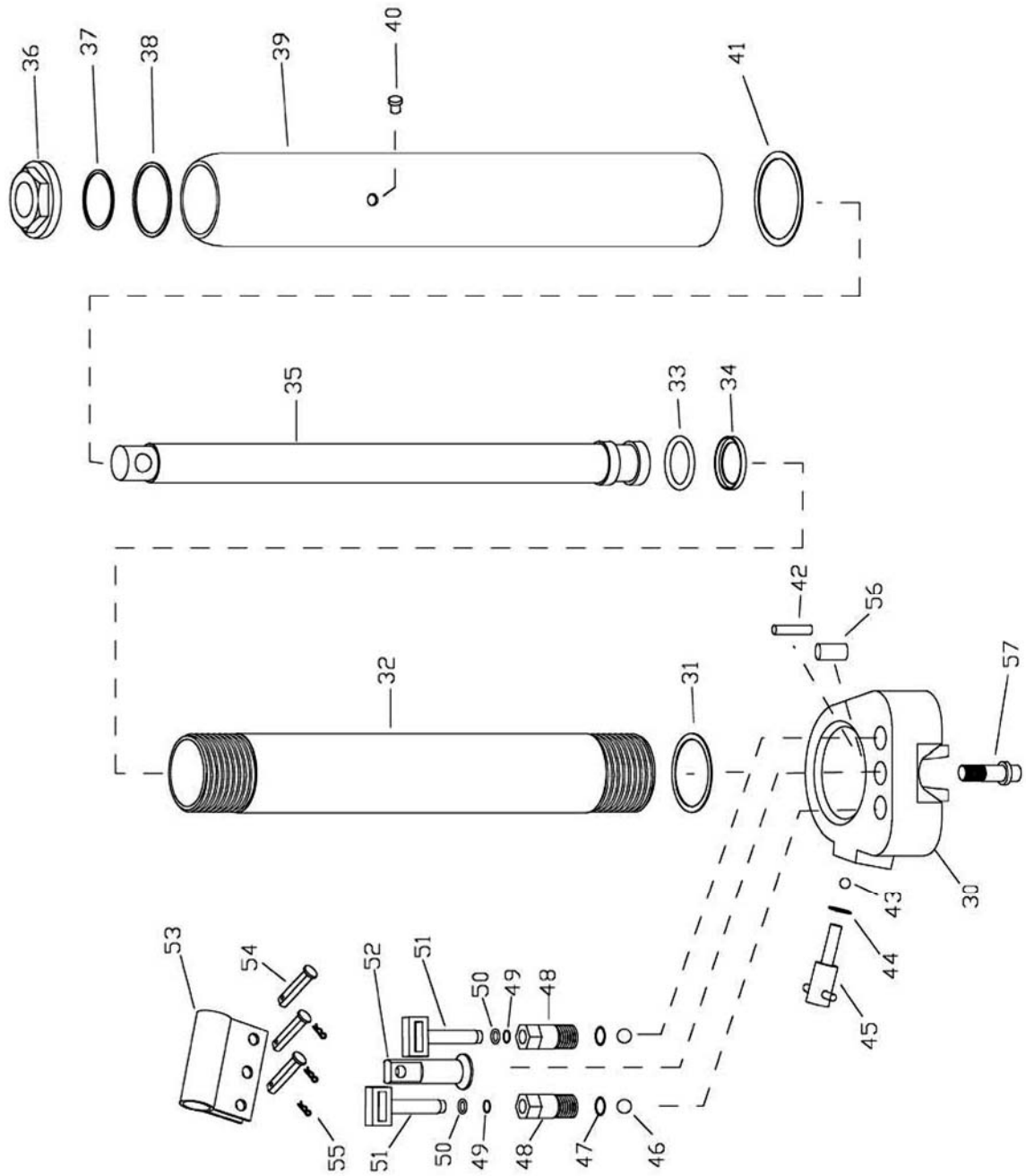
Hydraulic Crane Assembly – Exploded View



Hydraulic Crane Assembly – Parts List

Index No.	Part No.	Description	Size	Qty
01	JHC200X-01	Base		1
02	TS-1540081	Hex Nut	M12	6
03	JHC200X-03	Extension Leg (short)		2
04	TS-1490031	Hex Cap Bolt	M8×20	16
05	JHC200X-05	Caster Assembly		4
06	TS-1551061	Lock Washer	M8	16
07	TS-1540061	Hex Nut	M8	16
08	JHC200X-08	Extension Leg (long)		2
09	TS-1492011	Hex Cap Bolt	M12×25	2
10	JHC200X-10	Post		1
11	JHC200X-11	Support		2
12	TS-1492101	Hex Cap Bolt	M12×100	2
13	JHC200X-13	Boom		1
14	JHC200X-14	Hex Cap Bolt	M20×125	1
15	TS-1540121	Hex Nut	M20	1
16	JHC200X-16	Boom Extension		1
17	JHC200X-17	Hex Cap Bolt	M16×100	1
18	TS-1540101	Hex Nut	M16	3
19	JHC200X-19	Load Hook w/chain		1
20	TS-1499141	Hex Cap Bolt	M12×80	1
21	JFHC200X-6	Ram Assembly		1
22	JHC200X-22	Hex Cap Bolt	M16×75	1
23	JHC200X-23	Handle		1
24	JHC200X-24	Steering Handle		2
25	JHC200X-25	Washer		2
26	JHC200X-26	Adjustment Pin		1
27	JHC200X-27	Hitch Pin		1
28	JHC200X-28	Small Cover		5
29	JHC200X-29	Big Cover		1
	JHC200X-RK	Ram Repair Kit (not shown)		1
	JHC200X-ID	I.D. Label (not shown)		1
	JHC200X-WL	Warning Label (not shown)		1
	JHC200X-CL	Capacity Labels (set of 4: 1/2T,1T,1.5T,2T)(not shown)		1

Hydraulic Ram – Exploded View



Hydraulic Ram – Parts List

Index No.	Part No.	Description	Size	Qty
	JFHC200X-6	Hydraulic Ram Assembly		1
30	JFHC200X-30	Valve Body		1
31	JFHC200X-31	Copper Washer *	M46	1
32	JFHC200X-32	Cylinder		1
33	JFHC200X-33	O-ring *	M40x5.5	1
34	JFHC200X-34	O-ring Retainer *	M31.3x3.55	1
35	JFHC200X-35	Ram		1
36	JFHC200X-36	Top Nut	M48	1
37	JFHC200X-37	O-ring *	M33.5x3.55	1
38	JFHC200X-38	Gasket *	M70x1	1
39	JFHC200X-39	Oil Chamber		1
40	JFHC200X-40	Oil Plug *	M15x9.5	1
41	JFHC200X-41	Seal Ring *	M81x4	1
42	JFHC200X-42	Tube		1
43	SB-6MM	Steel Ball	M6	1
44	JFHC200X-44	Seal Ring *	M88x6	1
45	JFHC200X-45	Release Valve		1
46	SB-6MM	Steel Ball	M6	2
47	JFHC200X-47	Copper Washer *	M18	2
48	JFHC200X-48	Pump Cylinder		2
49	JFHC200X-49	O-ring *	M66x3	2
50	JFHC200X-50	Back-up Ring *	M12x7	2
51	JFHC200X-51	Plunger (<i>s/n 12020001 and higher</i>)		2
	JFHC200X-51A	Plunger (<i>previous to s/n 12020001</i>)		1
52	JFHC200X-52	Link Pin		1
53	JFHC200X-53	Handle Socket		1
54	JFHC200X-54	Connecting Pin		3
55	JFHC200X-55	Cotter Pin		3
56	JFHC200X-56	Pin	M2x30	1
57	JFHC200X-57	Bolt	M14x45	1
	JFHC200X-RK	Ram Repair Kit (includes items with asterisk *)		



TEST CERTIFICATE

COMMODITY	Hydraulic Shop Crane
MODEL	JHC-200X
SERIAL NO.	
CAPACITY	2 Ton
TEST LOAD	2 Ton
DATE OF INSPECTION	
JUDGEMENT	PASSED
INSPECTOR	

WALTER MEIER (Manufacturing) Inc.
427 New Sanford Road
LaVergne, Tennessee 37086
Phone: 800-274-6848
www.waltermeier.com