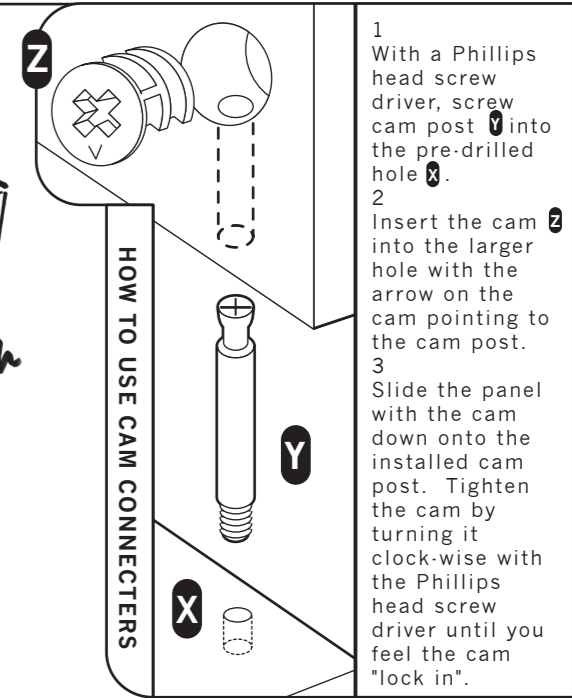
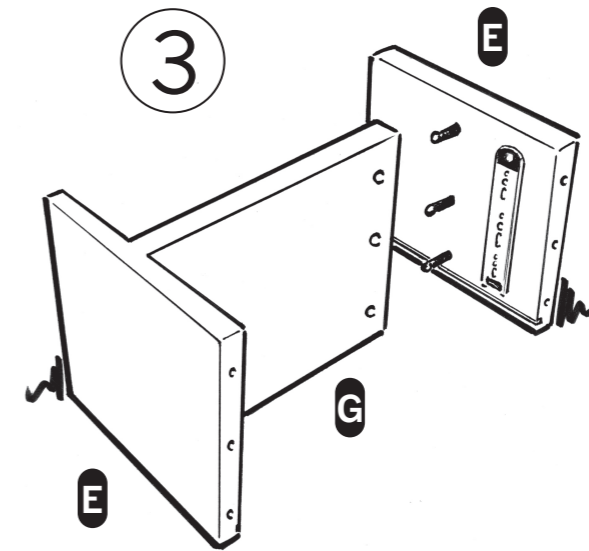
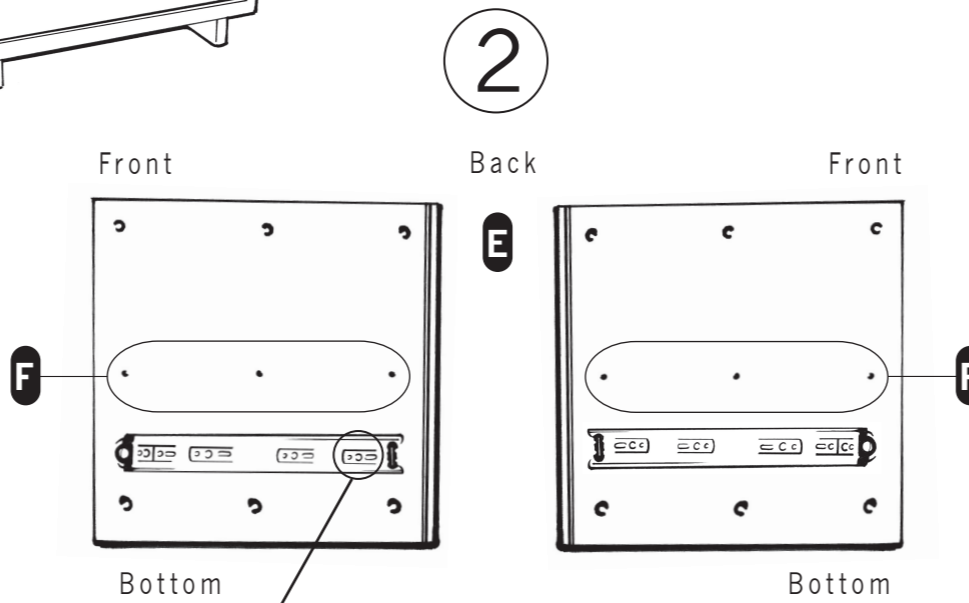
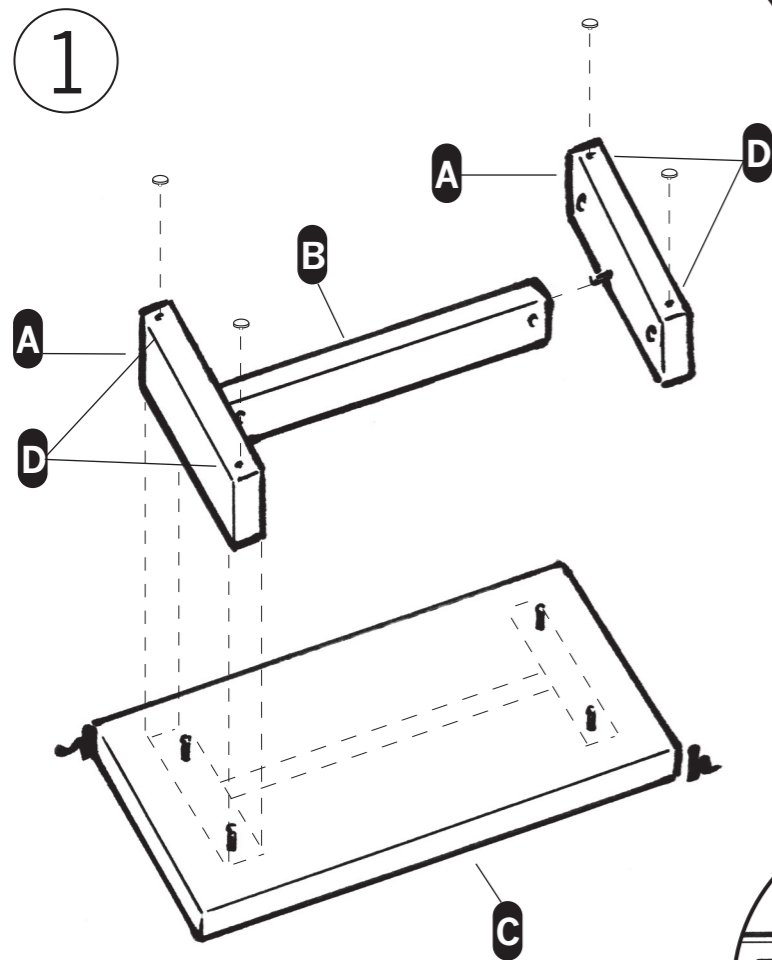
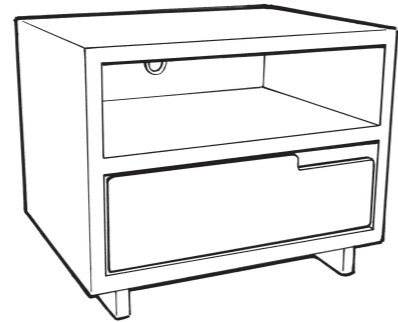


Assembly Notes

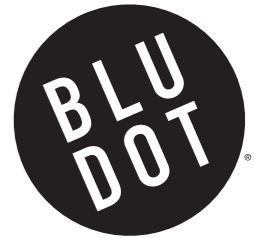
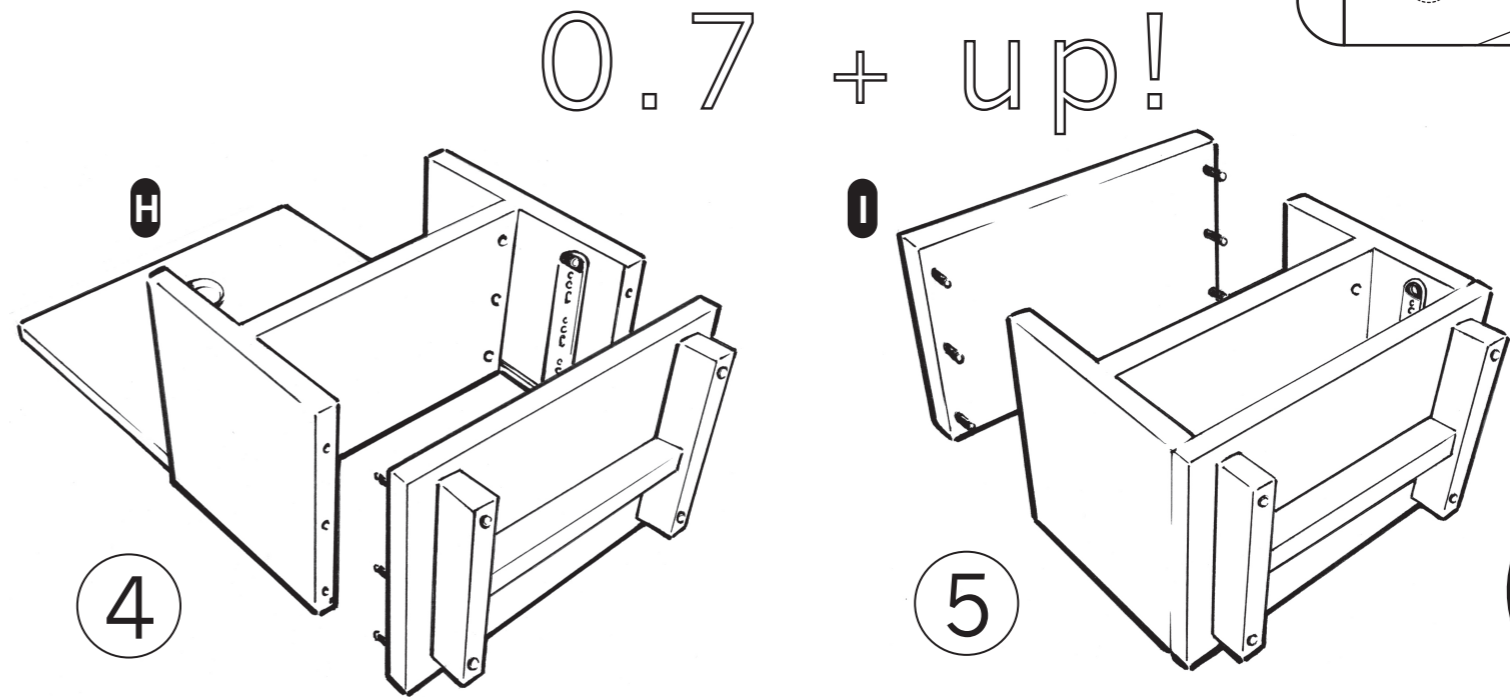
MODULICIOUS SIDE TABLE



1 With a Phillips head screw driver, screw cam post **Y** into the pre-drilled hole **X**.
 2 Insert the cam **Z** into the larger hole with the arrow on the cam pointing to the cam post.
 3 Slide the panel with the cam down onto the installed cam post. Tighten the cam by turning it clockwise with the Phillips head screw driver until you feel the cam "lock in".

For ages..

Your first screw goes here
 Your second screw will be in the second hole from the front



Assemble on carpet or protective mat. Before beginning, familiarize yourself with using cam connectors. (see insert right corner)

- 1 See Sketch 1. Screw cam posts into the small holes on the side of each foot **A**. Place two cams in the stretcher **B** so that the arrow points towards the end of the stretcher and turn the cams to the right until snug. Now, you know how cams work (a valuable skill).
- 2 Locate the bottom panel **C**. This panel has small holes drilled on both faces (the top and middle panels have holes on only one side). Find the side with the groove. Place this side face down. Now with the other side facing up, screw cam posts into all four holes. Place cams into the four holes on the feet **A**. Attach feet / stretcher assembly to bottom panel by turning cams until snug.
- 3 Push foot tacks into under side of the feet **D**.
- 4 Turn this whole assembly over so it faces right side up, install six more cam posts and set aside.
- 5 Locate the side panels **E** and lay them on the floor with the holes and grooves facing up as shown in Sketch 2. Orient your drawer slides on the panels as shown and screw two slide screws in each slide (See detail). Install 3 cam posts in the holes in the middle of each panel **F**.

- 6 Now, insert 3 cams into the large holes at the top of each panel. The arrows in the cams should be facing towards the top (up, if you are looking at Sketch 2). Repeat this process for the cams in the bottom holes, except the arrows on these cams should be facing towards the bottom edge (down).
- 6 See Sketch 3. Locate the middle divider **G** (this panel has 6 large holes on one side). Insert 6 cams into large holes. Now slide the middle divider onto the cam posts on each of the side panels as shown. Be sure that the cams face your slides, so they do not show when assembled. See Sketch 4. Take your assembly from Sketch 3 and attach it to the base assembly from Sketch 1.
- 7 Locate the back panel **H** (the skinny panel). Install the black rubber grommet into the hole by squeezing it into place. Orient the back panel as shown and insert it into the grooves in each side panel. See Sketch 5. Insert 6 cam posts into the underside of the top panel **I** and attach it to the sides by turning the cams until they are snug.
- 8 To install each drawer, pull the ball bearing cartridges on the cabinet slides to the front. Align drawer mounted slides with the cabinet slides and slide the drawer in. You're done!

REV 0 04.12.06

HARDWARE INVENTORY

- 24 cams
- 24 cam posts
- 4 foot tacks
- 1 black grommet
- 4 slide screws

WOOD COLOR OVER TIME: Air and daylight will naturally change the color of the wood. For most woods, this change is gradual and very slight. During the first several months, while the patina is developing, items placed on the wood should be rotated to different locations to prevent uneven coloration. Over time an even patina will develop.

BLU DOT DESIGN AND MANUFACTURING, INC. copyright 2005.
 www.bludot.com / t. 612.782.1844 / f. 612.782.1845