

ErgoStack Specifications



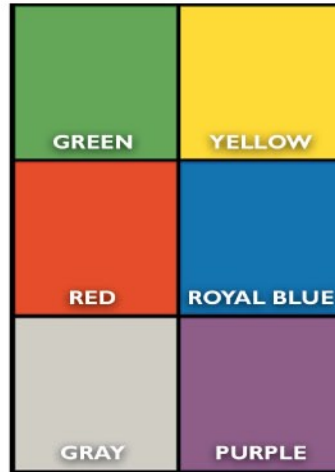
Main Frame

Legs are of 1" x 16 gauge HSLA (High Strength Low Alloy) steel tubing, the industry leader in lightweight and high strength chair frame work. Bends are precision controlled with dedicated proprietary equipment. Legs are electrically welded to base frame. Blind rivets used in seat attachment are zinc plated to resist rust.



Pre-Treatment and Powder Coating

Tubing is pretreated in a 5 stage industrial cleaning for enhanced corrosion resistance and preparation of the tube surface for maximum molecular bonding of the powder coating. Polyester powder coating has outstanding thin film properties, toughness of film, excellent weathering properties, and a smooth appearance.



ITEM #	SIZE
85000	12"
84000	14"
83000	16"
82000	18"
COLOR CODE	
GN = GREEN	
YL = YELLOW	
RD = RED	
RB = ROYAL BLUE	
GY = GRAY	
PU = PURPLE	
COMPLETE PART NUMBER IS ITEM # + COLOR CODE EXAMPLE: 14" RED CHAIR 84000RD	

Chair Glides

Injection molded, industrial quality nylon swivel glides.



Seat

Injection molded polypropylene plastic formulated with anti-static and ultra violet additives with color blended throughout. Adult size seat used on 16" and 18" chairs. Child size seat on 12" and 14" chairs.



Stacking Bumper

Injection molded plastic bumpers adjust chair pitch to stack 10-12 chairs high.



Weight & Dimensions

Size is measured at the front of the seat. ErgoStack chairs are available in 12", 14", 16" and 18". To determine the correct size needed, measure the user from the bend at the back of the knee to the floor. This measurement is the chair height needed for that person. See chart for dimensions and weight.



Color

Seats available in Green, Yellow, Red, Royal Blue, Gray, Purple.

Frame is black powder coat finish for extreme commercial use.



	12"	14"	16"	18"
A SEAT HEIGHT	12"	14"	16"	18"
B SEAT WIDTH	12"	12"	16"	16"
C SEAT DEPTH	12"	12"	15"	15"
D BACK HEIGHT	10"	10"	13"	13"
E BACK WIDTH	11"	11"	14.5"	14.5"
F VENT HEIGHT	3"	3"	4"	4"
G VENT WIDTH	7"	7"	9.5"	9.5"
H LEG WIDTH	16"	16.5"	19"	19"
I LEG DEPTH	13"	14"	17"	18"
J TOTAL HEIGHT	20.5"	22.5"	28"	30"
WEIGHT	6 lbs	7 lbs	12 lbs	13 lbs

Guarantee

Full 1 year warranty under normal use. McCourt Manufacturing will repair or replace (at our option) at no charge; customer assumes all freight charges.



1001 North 3rd Street, Fort Smith, Arkansas 72901
 Phone: 800-333-2687 / 479-783-2593 Fax: 800-982-2530 / 479-783-7608
 info@mccourtmg.com www.mccourtmg.com