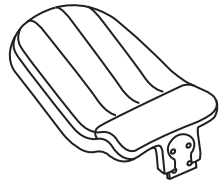


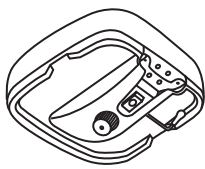
# Model 640 Posture Task Chair

## Parts Listing

A  
Chair Back  
1 Unit



B  
Chair Seat  
1 Unit



C  
Chair Base  
1 Unit



D  
Casters  
5 Units



E  
Gas Lift  
1 Unit



F  
Telescopic Bellows  
1 Unit



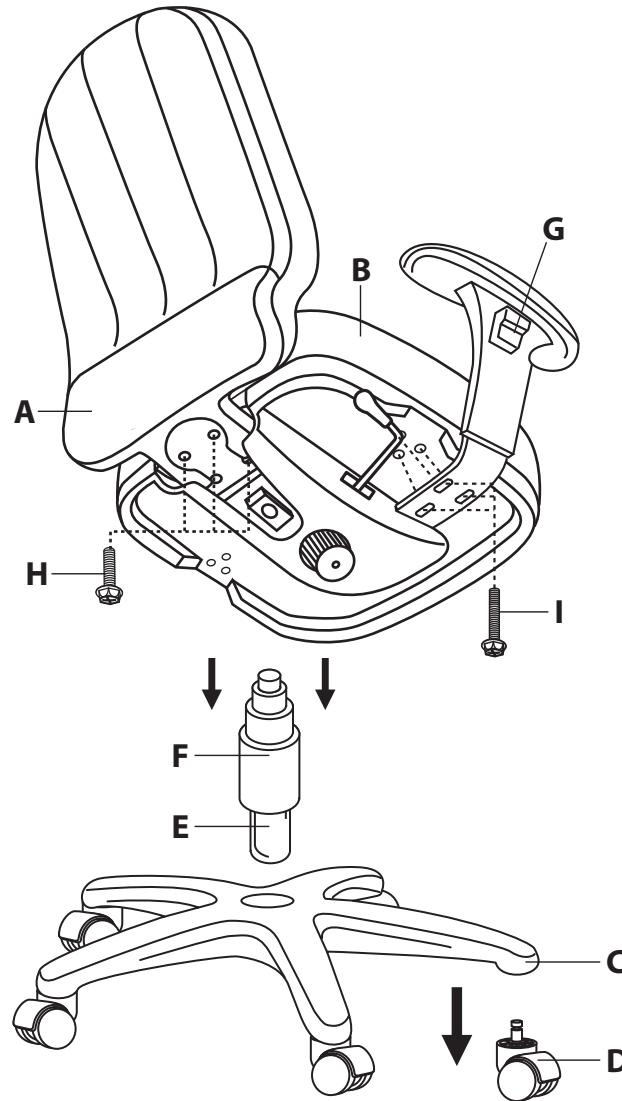
G  
Chair Arms  
2 Units



H  
8mm Screw  
4 Units



I  
6mm Screw  
6 Units



**WEIGHT CAPACITY: 250 lbs.**

### Assembly Notes:

During assembly, hand tighten screw only when all screws are in place, you may then tighten all screws completely.

### CAUTION:

1. Do not use this chair as a step ladder.
2. Check for loose screws and tighten them every 6 months.

## Assembly Instructions



**Tools Needed: Phillips Head Screwdriver**  
*Please read all instructions before assembly.*

**Step 1:** Insert Casters (D) into Chair Base (C).

**Step 2:** Insert Gas Lift (E) into Chair Base (C) and cover with Telescopic Bellows (F).

**Step 3:** Attach Chair Arms (G) using six 6mm Screws (I). At this stage, you have some adjustments to how close to the side of the seat the arms should be. Tighten firmly.

**Step 4:** Attach Chair Back (A) to Chair Seat (B) using four 8mm Screws (H). Tighten firmly.

**Step 5:** Carefully place Chair Seat (B) onto the Gas Lift (E), aligning the hole in Chair Seat (B) with the Gas Lift (E).

**Step 6:** Carefully sit on chair to make sure the Gas Lift (E) is properly inserted into the Base (C).

**ofm**  
Furniture For The Real Office™

161 Tradition Trail Holly Springs, NC, 27540  
800-520-7471 (voice) 919-362-4765 (fax)  
919-303-6389 (voice) www.ofminc.com  
support@ofminc.com