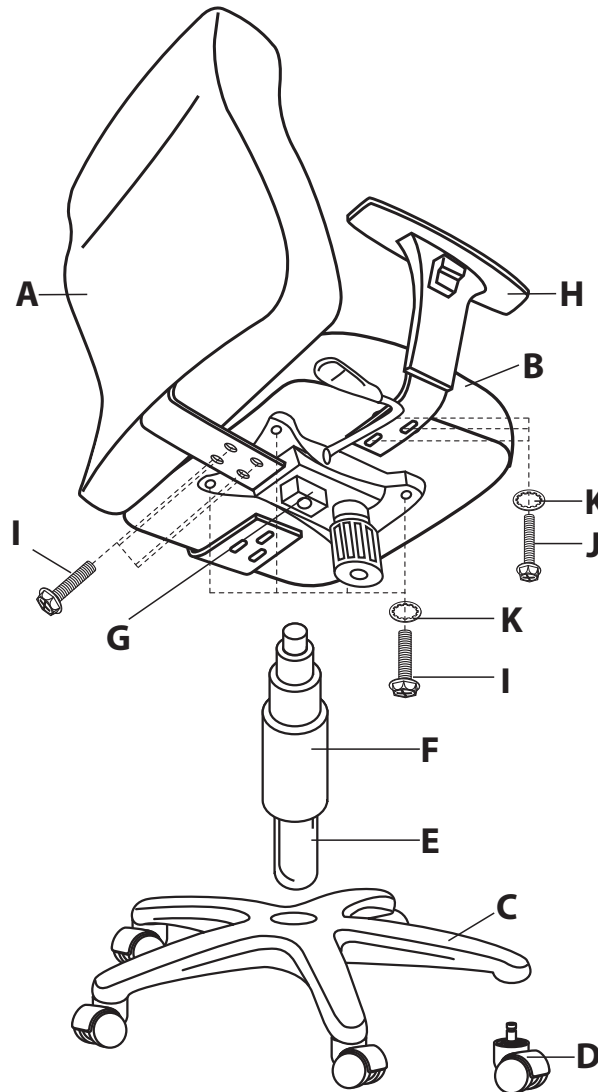
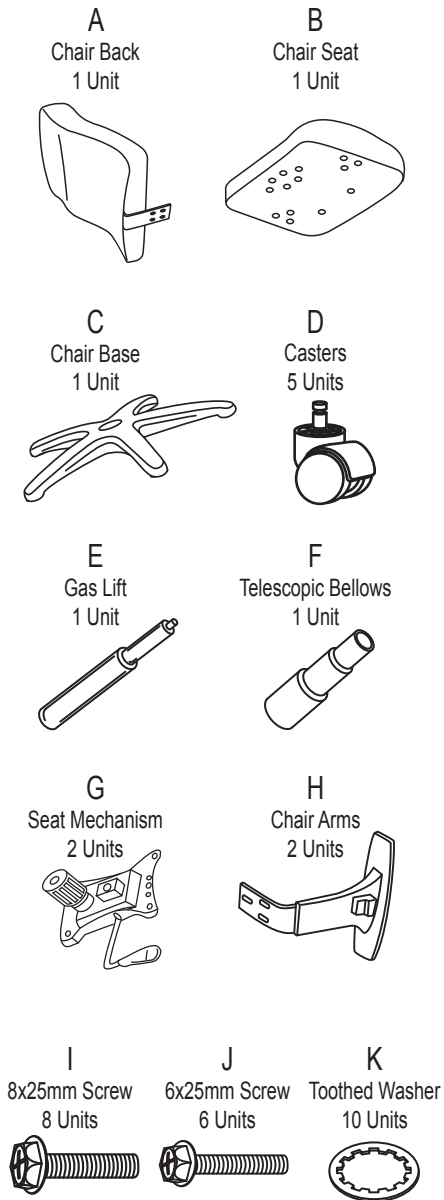


Model 606 Executive/Conference Chair with Adjustable Arms

Parts Listing



WEIGHT CAPACITY: 250 lbs.

Assembly Notes:

During assembly, hand tighten screw only when all screws are in place, you may then tighten all screws completely.

CAUTION:

1. Do not use this chair as a step ladder.
2. Check for loose screws and tighten them every 6 months.

Assembly Instructions



Tools Needed: Phillips Head Screwdriver
Please read all instructions before assembly.

- Step 1:** Insert Casters (D) into Chair Base (C).
- Step 2:** Insert Gas Lift (E) into the hole in the Chair Base (C), and cover with Telescopic Bellows (F).
- Step 3:** Attach the Seat Mechanism (G) to the underside of the Chair Seat (B) using the 8x25mm Screws (I) with Toothed Washers (K).
- Step 4:** Place Chair Seat (B) onto the Chair Base (C) by inserting the top of the Gas Lift (E) into the hole in the center of the Seat Mechanism (G). Press down firmly on seat to secure.
- Step 5:** Attach the Chair Back (A) to the assembled seat by inserting 8x25mm Screws (I) into the holes in the Chair Seat (B) and Seat Mechanism (G).
- Step 6:** Attach the Chair Arms (H) to the assembled chair by inserting 6x25mm Screw (J) with Washers (K) through the holes in the Arms (H) and into the bottom of the Chair Seat (B).
- Step 7:** Carefully sit on chair to make sure the Gas Lift (E) is properly inserted into the Base (C). Operate the Gas Lift Lever on the Seat Mechanism (G), to be sure unit is working properly.

ofm^U_Z
Furniture For The Real Office™

161 Tradition Trail Holly Springs, NC, 27540
800-520-7471 (voice) 919-362-4765 (fax)
919-303-6389 (voice) www.ofminc.com
support@ofminc.com