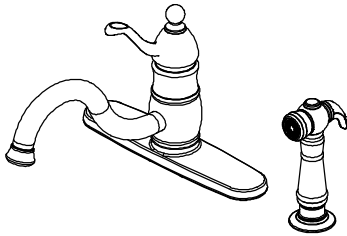


# Premier®

Brand Kitchen Faucets



Model Number: 120449LF & 120450LF

## INSTALLATION

### Tools:

Adjustable wrench



Pipe tape



Pipe wrench



Groove joint pliers



Basin wrench



screwdriver



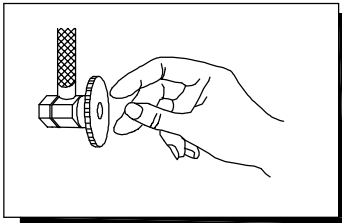
Plumber's putty



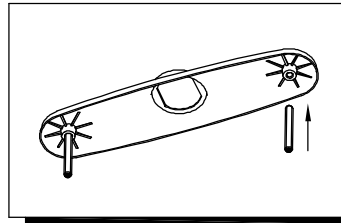
### Cleaning:

To maintain and protect the fine luster of all products, clean with a soft damp cloth only. DO NOT USE detergents or cleanser as they may harm the protective finish.

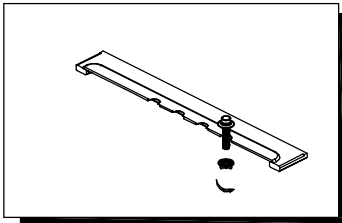
## INSTALLATION STEPS: Single handle kitchen faucet



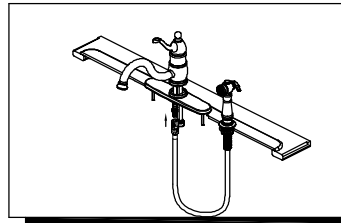
1. Shut off water supply at angle stop. Remove old faucet. Clean sink surface in preparation for new faucet.



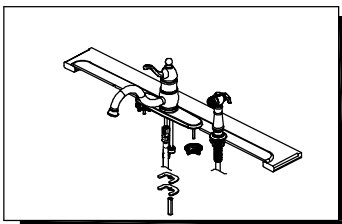
2. Screw metal threaded rods into faucet cover plate. Tighten rods with screwdriver (Use cross-slots in end of rod).



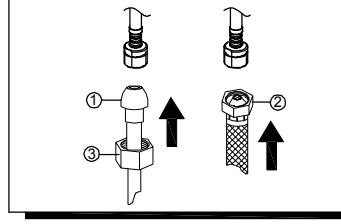
3. For models with spray : Insert spray support through far right - hand hole on sink. Screw hold - down nut onto shank and hand tighten.



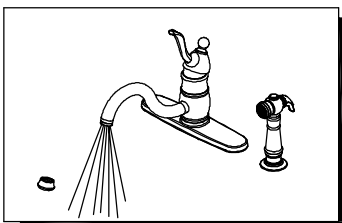
4. For models with spray Insert spray hose down through support and sink. Attach spray hose to spray hose nipple.



5. Hand tighten mounting nut onto thread rod. Install rubber washer, metal washer and nut onto the mounting shank.

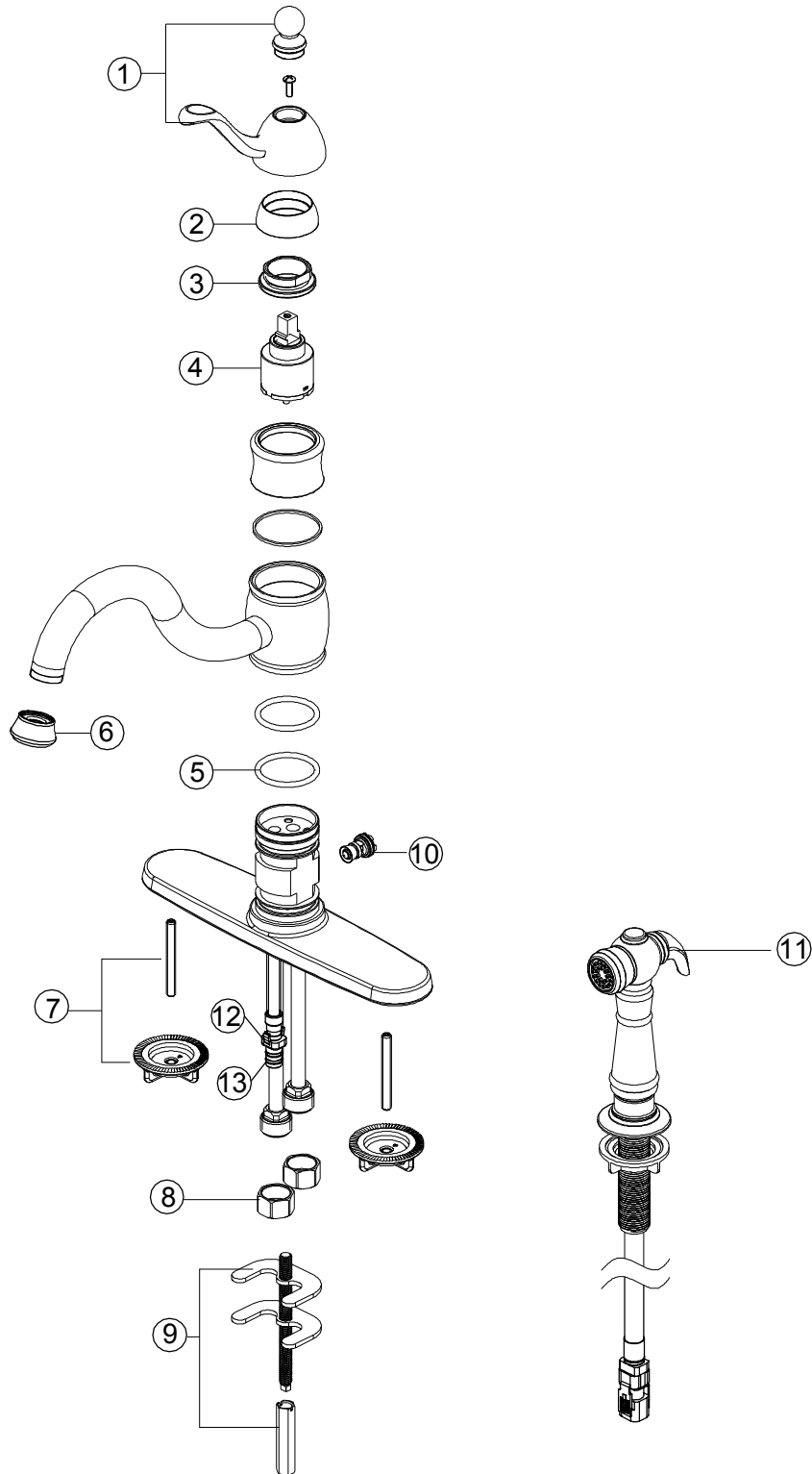


6. Make Connections to water lines: Choose hook-ups for 1/2" I.P.S. connections:  
(1) Ball nose riser (3/8" O.D. copper tubing), or (2) 1/2" I.P.S. faucet connector Use the enclosed coupling nuts (3) with the ball nose risers (1). Use two wrenches when tightening. Do not overtighten.



7. Important: After installation is completed, remove aerator. Turn on water supply and allow both hot and cold water to run for at least one minute each. While water is running, check for leaks. Replace aerator.

Parts List



MODEL NO. 120449LF			
NO.	PART DESCRIPTION	PART NO.	QTY.
1	Handle Assembly	994673	1
2	Bonnet Cap	994709	1
3	Bonnet Nut	994721	1
4	Ceramic Cartridge	994658	1
5	Spout O-ring	994680	2
6	Aerator	994681	1
7	Post Mounting Kit	994661	1
8	Coupling Nuts	4CP308	2
9	Mounting Kit	165	1
10	Diverter	994659	1
11	Sprayer, Hose & Cradle	185	1
12	Block	129	1
13	O-ring	130	2

MODEL NO. 120450LF			
NO.	PART DESCRIPTION	PART NO.	QTY.
1	Handle Assembly	994674	1
2	Bonnet Cap	994710	1
3	Bonnet Nut	994721	1
4	Ceramic Cartridge	994658	1
5	Spout O-ring	994680	2
6	Aerator	994682	1
7	Post Mounting Kit	994661	1
8	Coupling Nuts	4CP308	2
9	Mounting Kit	165	1
10	Diverter	994659	1
11	Sprayer, Hose & Cradle	186	1
12	Block	129	1
13	O-ring	130	2