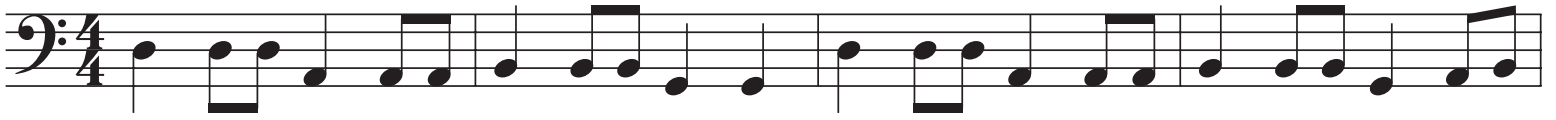


Quick Time

CHORDS: D A Bm G D A Bm G



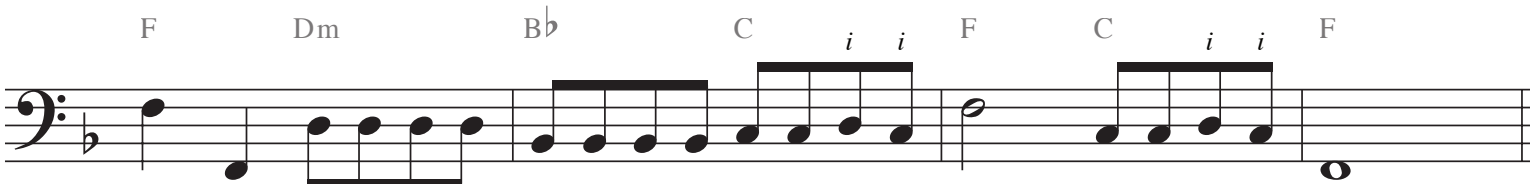
D A Bm G D A D



When you are fingerpicking and moving quickly from a higher string to a lower string, try using the same finger (*i* or *m*) to play both strings.

Early Rock with Eighths

CHORDS: F Dm B \flat C *i m i i* F Dm B \flat *i i*



Eightude

CHORDS: B \flat E \flat Dm Gm F B \flat E \flat B \flat C F
i m i i *i m i i m i m m*

